

# Basic Report

---



**Title:** Abandoned Building in the Woods  
**Primary Maker:** William Savery Bucklin  
**Medium:** Graphite on paper



**Title:** Bare Trees in Winter  
**Primary Maker:** William Savery Bucklin  
**Medium:** Graphite and Charcoal on textured paper glued to thin card board



**Title:** Birch Forest, Adirondacks  
**Primary Maker:** William Savery Bucklin  
**Medium:** Pen and ink on paper



**Title:** Birth Record of John Mason  
**Medium:** Watercolor, pen and ink on paper



**Title:** Broken Bridge Over a Stream  
**Primary Maker:** William Savery Bucklin  
**Medium:** Graphite on paper



**Title:** Brown Family Birth Record  
**Medium:** Watercolor and iron gall ink on wove paper



**Title:** Brunswick, N. Jersey from the North  
**Primary Maker:** Archibald Robertson  
**Medium:** Ink on paper



**Title:** California Sand Bluff and Moonlight  
**Primary Maker:** William Savery Bucklin  
**Medium:** Graphite on paper



**Title:** Captain James Lawrence for Martin N. Hulick  
**Medium:** Pen, ink and watercolor on paper



**Title: Corner of the  
Phalanstery Building in  
Late Fall**

**Primary Maker:** William  
Savery Bucklin

**Medium:** Graphite on paper  
glued to cardboard



**Title: Corn Field**

**Primary Maker:** William  
Savery Bucklin

**Medium:** Graphite on paper



**Title: Cottage and  
Trees Near Stanwick,  
Connecticut**

**Primary Maker:** William  
Savery Bucklin

**Medium:** Pen and ink on  
laid paper



**Title: Cottage and  
Trees Near Stanwick,  
Connecticut**

**Primary Maker:** William  
Savery Bucklin

**Medium:** Graphite on paper



**Title: A Cottage in the  
Snowy Moonlight**

**Primary Maker:** William  
Savery Bucklin

**Medium:** Graphite on paper



**Title: Design for a Rug**

**Primary Maker:** A. and M.  
Karagheusian

**Medium:** Gouache over  
graphite on cardstock  
paper



**Title: Entrance to Irving  
Bacheller Forest  
Adirondack Camp**

**Primary Maker:** William  
Savery Bucklin

**Medium:** Pen and ink on  
paper mounted on  
cardboard



**Title: Field, Trees, and  
Phalanx Outbuildings**

**Primary Maker:** William  
Savery Bucklin

**Medium:** Graphite on paper  
glued to cardboard



**Title: Fishing for Trout  
on Louis Brook, Nova  
Scotia**

**Primary Maker:** William  
Savery Bucklin

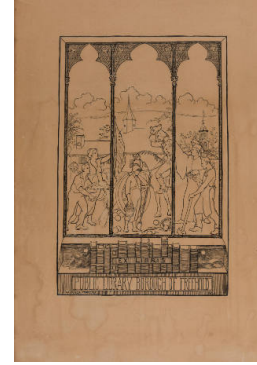
**Medium:** Graphite on paper



**Title:** Florida Forest Scene with Palms  
**Primary Maker:** William Savery Bucklin  
**Medium:** Graphite on paper glued to card board



**Title:** Freehold Court House, 1731  
**Primary Maker:** William C. Asman  
**Medium:** Ink on paper



**Title:** Freehold Library Bookplate Drawing  
**Medium:** Ink on heavy paper mounted on cardboard



**Title:** General White's, Brunswick  
**Primary Maker:** Archibald Robertson  
**Medium:** Ink on paper



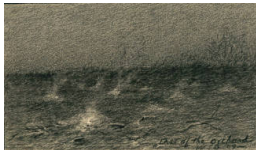
**Title:** Hartshorne House  
**Primary Maker:** Nina Hepburn  
**Medium:** Charcoal



**Title:** The Horse Fair  
**Primary Maker:** Henry Thomas Gulick  
**Medium:** Charcoal on paper



**Title:** House at Phalanx  
**Primary Maker:** William Savery Bucklin  
**Medium:** Graphite on paper glued to cardboard

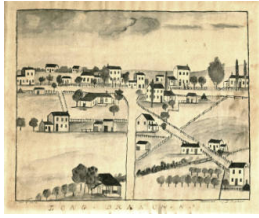


**Title:** Last of the Orchard (Burning Brush in the Orchard)  
**Primary Maker:** William Savery Bucklin  
**Medium:** Charcoal and graphite on paper mounted on cardboard



**Title:** Little Tobiatic Brook  
**Primary Maker:** William Savery Bucklin  
**Medium:** Graphite on paper





**Title:** Long Branch, N. J.  
**Primary Maker:** Joshua Parker  
**Medium:** Watercolor, gouache and ink on paper



**Title:** Men Stacking Hay  
**Primary Maker:** William Savery Bucklin  
**Medium:** Graphite on paper mounted on cardboard



**Title:** Midnight Storm on Wildcat Point, Nova Scotia  
**Primary Maker:** William Savery Bucklin  
**Medium:** Graphite on paper



**Title:** Mills of Thomas Bennet Esq., Second River Near the Passaic River, N. Jersey  
**Primary Maker:** Archibald Robertson  
**Medium:** Ink on paper



**Title:** The Monarch of the Glen  
**Primary Maker:** Henry Thomas Gulick  
**Medium:** Charcoal on paper



**Title:** Monmouth Battle Grounds, N. J.  
**Primary Maker:** Unknown Artist  
**Medium:** Pastel on art board



**Title:** Monmouth Court House in 1778  
**Primary Maker:** Unknown Artist  
**Medium:** Graphite drawing with wash shading on cream colored paper with ink inscriptions



**Title:** Moonlit Woods  
**Primary Maker:** William Savery Bucklin  
**Medium:** Graphite on paper



**Title:** Morford and Spinning Store  
**Primary Maker:** Sarah Hendrickson Van Schoick Reid  
**Medium:** Pastel and charcoal on prepared board coated with marble dust



**Title:** Morning Frost  
**Primary Maker:** William Savery Bucklin  
**Medium:** Graphite on paper glued to card board



**Title:** Mossy Tree and Palmettos (Florida Landscape)  
**Primary Maker:** William Savery Bucklin  
**Medium:** Graphite on paper



**Title:** Night Landscape at North American Phalanx  
**Primary Maker:** William Savery Bucklin  
**Medium:** Graphite on paper glued to cardboard



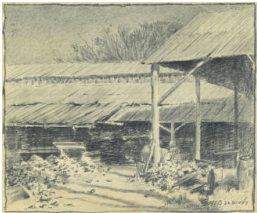
**Title:** Night Scene of the Phalanstery Building  
**Primary Maker:** William Savery Bucklin  
**Medium:** Graphite on paper, mounted on cardboard



**Title:** The Olde Academy, Middletown Point  
**Primary Maker:** Unknown Artist  
**Medium:** Graphite on paper



**Title:** Old Outbuildings and Barrels at the Phalanx  
**Primary Maker:** William Savery Bucklin  
**Medium:** Graphite and charcoal on paper mounted to cardboard



**Title:** Old Phalanx Lunber Yard and Workshops  
**Primary Maker:** William Savery Bucklin  
**Medium:** Graphite on paper



**Title:** Old Tennent Church  
**Primary Maker:** Frank Ochs  
**Medium:** Ink on heavy paper



**Title:** Old Tennent Church  
**Primary Maker:** H. Catkins  
**Medium:** Charcoal with traces of graphite on heavy paper



**Title:** Old Tennent Church  
**Primary Maker:** Unknown Artist  
**Medium:** Graphite on paper



**Title:** Old Tennent Church  
**Primary Maker:** Will Hammell  
**Medium:** Graphite and ink on artist's board



**Title:** Old Tennent Church and Graveyard  
**Primary Maker:** Miss Harriet E. Applegate  
**Medium:** Graphite and pastel on sandpaper board



**Title:** Old Tennent Parsonage  
**Primary Maker:** Carrie A. Bowne Swift  
**Medium:** Graphite on paper



**Title:** The Parsonage in 1850  
**Primary Maker:** Unknown Artist  
**Medium:** Graphite with wash shading on cream colored paper with ink inscriptions



**Title:** The Phalanstery Building in Winter  
**Primary Maker:** William Savery Bucklin  
**Medium:** Graphite on paper mounted on cardboard, with varnished surface



**Title:** The Phalanstery Building in Winter  
**Primary Maker:** William Savery Bucklin  
**Medium:** Graphite on paper glued to cardboard



**Title:** Phalanx Landscape  
**Primary Maker:** William Savery Bucklin  
**Medium:** Graphite on paper glued to cardboard



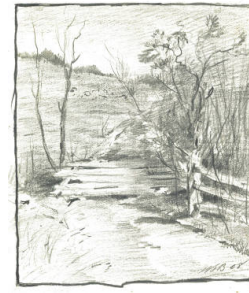
**Title:** Phalanx Ruin  
**Primary Maker:** William Savery Bucklin  
**Medium:** Graphite on paper



**Title:** A Pond in Moonlight  
**Primary Maker:** William Savery Bucklin  
**Medium:** Graphite on paper



**Title:** Road and Barn  
**Primary Maker:** William Savery Bucklin  
**Medium:** Graphite on paper



**Title:** Road, Fence, Trees and Hill  
**Primary Maker:** William Savery Bucklin  
**Medium:** Graphite on paper glued to cardboard



**Title:** Road To Laws Farm in the Moonlight  
**Primary Maker:** William Savery Bucklin  
**Medium:** Graphite on paper



**Title:** A Rocky Shore with Mossy Trees and Lake  
**Primary Maker:** William Savery Bucklin  
**Medium:** Graphite on paper



**Title:** Ruins of an Old Building in the Woods  
**Primary Maker:** William Savery Bucklin  
**Medium:** Graphite on paper glued to cardboard



**Title:** Rutgers College  
**Primary Maker:** Mary Ann Van Schoick  
**Medium:** Black and white pastel on thin cardboard prepared with marble dust



**Title:** Starry Night Landscape  
**Primary Maker:** William Savery Bucklin  
**Medium:** Graphite on paper mounted on cardboard



**Title:** Steamboat on the River  
**Primary Maker:** William Savery Bucklin  
**Medium:** Graphite on paper





**Title:** Stream and Trees in Winter  
**Primary Maker:** William Savery Bucklin  
**Medium:** Ink on paper



**Title:** Studio by Moonlight  
**Primary Maker:** William Savery Bucklin  
**Medium:** Graphite on paper mounted on cardboard



**Title:** Sycamore Canyon  
**Primary Maker:** William Savery Bucklin  
**Medium:** Graphite on paper



**Title:** Three Dancing Ladies  
**Primary Maker:** Phebe Mills  
**Medium:** Watercolor, pen and ink on wove paper



**Title:** Trees and Stream  
**Primary Maker:** William Savery Bucklin  
**Medium:** Pen and ink on paper in original hinged mat board



**Title:** Trees and Woods  
**Primary Maker:** William Savery Bucklin  
**Medium:** Graphite on paper



**Title:** Trees in Late Fall  
**Primary Maker:** William Savery Bucklin  
**Medium:** Graphite on paper mounted on cardboard



**Title:** Tree Trunks and Woods at the Phalanx  
**Primary Maker:** William Savery Bucklin  
**Medium:** Graphite on paper



**Title:** Tree Trunks on the Hillside  
**Primary Maker:** William Savery Bucklin  
**Medium:** Graphite on paper mounted on cardboard





**Title: Two Cliffs**

**Primary Maker:** William Savery Bucklin

**Medium:** Graphite on paper glued to cardboard



**Title: View of Brunswick, N. Jersey**

**Primary Maker:** Archibald Robertson

**Medium:** Ink and graphite on paper



**Title: View of Shrewsbury Town, New Jersey**

**Primary Maker:** Unknown Artist

**Medium:** Ink and gray wash over graphite on beige paper



**Title: Village of Long Branch, New Jersey 1849**

**Primary Maker:** Joshua Parker

**Medium:** Watercolor and ink on paper



**Title: Washington Confronting the Hessians at the Battle of Trenton**

**Primary Maker:** Edouard Frossard

**Medium:** Ink and wash drawing on vellum.



**Title: Washington's Headquarters at Newburgh**

**Primary Maker:** Sarah Hendrickson Van Schoick Reid

**Medium:** Pastel and charcoal on prepared board coated with marble dust



**Title: Washington's Headquarters at Tappan**

**Primary Maker:** Sarah Hendrickson Van Schoick Reid

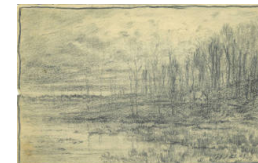
**Medium:** Pastel, charcoal and graphite on prepared board coated with marble dust



**Title: Water and Cliff**

**Primary Maker:** William Savery Bucklin

**Medium:** Graphite on paper mounted on cream colored card board



**Title: Wetland Landscape**

**Primary Maker:** William Savery Bucklin

**Medium:** Graphite on paper



**Title: Winter (Conifers and Fence in a Snowy Field)**

**Primary Maker:** William Savery Bucklin  
**Medium:** Pen and ink on paper



**Title: Winter Landscape with Trees and Stream**

**Primary Maker:** William Savery Bucklin  
**Medium:** Pen and ink on paper



**Title: Wooded Hillside**  
**Primary Maker:** William Savery Bucklin  
**Medium:** Graphite on laid paper



**Title: Wooded Hillside**  
**Primary Maker:** William Savery Bucklin  
**Medium:** Graphite on paper



**Title: A Wooded Path**  
**Primary Maker:** William Savery Bucklin  
**Medium:** Graphite on paper



**Title: Woods and Stream in Late Fall**  
**Primary Maker:** William Savery Bucklin  
**Medium:** Graphite on paper



**Title: Woods, Stream and Pond**  
**Primary Maker:** William Savery Bucklin  
**Medium:** Graphite on paper