

# Basic Report

---



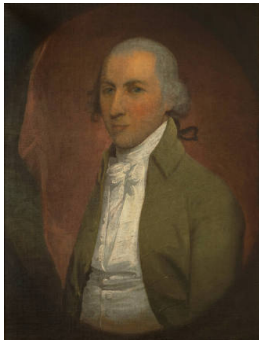
**Title:** 14th New Jersey Volunteer Ribbon  
**Medium:** Silk



**Title:** Aaron Smock  
**Primary Maker:** Micah Williams  
**Medium:** Pastel on paper



**Title:** Abandoned Building in the Woods  
**Primary Maker:** William Savery Bucklin  
**Medium:** Graphite on paper



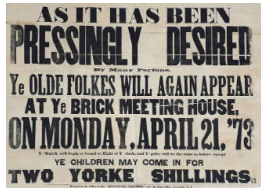
**Title:** Abraham Brinckerhoff  
**Primary Maker:** Unknown Artist  
**Medium:** Oil on canvas



**Title:** Accident on the Camden and Amboy Rail Road  
**Primary Maker:** John Collins  
**Medium:** Lithograph on paper



**Title:** Across the Hall  
**Primary Maker:** Henry Thomas Gulick  
**Medium:** Oil on masonite



**Title:** Advertising Poster  
**Medium:** Printed glazed cotton



**Title:** Aesop's Fables Plate  
**Medium:** Glazed earthenware



**Title:** Air Bomber Jacket  
**Medium:** Heavy cotton canvas, artificial fur, brass, cotton



**Title:** Aircraft Observer Buttons  
**Medium:** Paper, plastic laminate, aluminum



**Title:** Alderman's Long Staff  
**Medium:** Maple, leather, linen, ivory, and brass



**Title:** Alderman's Short Staff  
**Medium:** Walnut, leather, linen, and brass





**Title:** Allen House, Shrewsbury  
**Primary Maker:** Conrad Newman  
**Medium:** Oil on canvas



**Title:** Alsace Headdress Medal  
**Primary Maker:** Ernesta Robert-Merignac  
**Medium:** Bronze



**Title:** America Joins The Allies Medal  
**Medium:** Bronze



**Title:** American Doughboy Medal  
**Primary Maker:** Marcel Lordonnois  
**Medium:** Bronze



**Title:** Ann Vandervoort Rapalge Van Mater  
**Primary Maker:** Micah Williams  
**Medium:** Pastel on paper



**Title:** Apothecary Bottle  
**Medium:** Glass, cork



**Title:** Apothecary Chest  
**Primary Maker:** J.O. Green's Drug & Prescription  
**Medium:** Wood, leather, cardboard, iron, steel, velvet, glass, paper



**Title:** Apothecary Scales  
**Medium:** Wood, brass, iron



**Title:** Apothecary Scales  
**Medium:** Brass, iron, paper



**Title: Apron**  
**Medium:** Silk, silk and cotton cording, silk tassels



**Title: Apron**  
**Medium:** Silk, silk cord



**Title: Apron**  
**Medium:** Silk



**Title: Apron Pockets and Bib**  
**Primary Maker:** Ella Pullen Wilson  
**Medium:** Cotton



**Title: Arm Chair**  
**Medium:** Walnut, and hard pine or white cedar



**Title: Arm Chair**  
**Medium:** Walnut, hard pine, and white cedar



**Title: Arm Chair**  
**Medium:** Walnut



**Title: Arm Chair**  
**Medium:** Maple, poplar, and ash



**Title: Arm Chair**  
**Medium:** Maple, and oak



**Title: Army Dress Uniform Hat**  
**Medium:** Felted wool, plastic, cotton, canvas, leather, brass



**Title: Asbury Park Paperweight**  
**Medium:** Glass, paper print



**Title: Asparagus Buncher**  
**Primary Maker:** Henry L. Schanck  
**Medium:** Cast iron



**Title: Assortment of Dress Fabric Scraps**  
**Medium:** Cotton, cotton twill, silk, silk twill, cotton gauze; cardboard



**Title: At the Jersey Shore**  
**Primary Maker:** Alfred T. Bricher  
**Medium:** Watercolor and gouache over graphite on paper



**Title: Bag**  
**Medium:** Plied silk thread, steel cut beads



**Title: Bandbox**  
**Medium:** Pasteboard, printed wallpaper



**Title: Bandbox**  
**Medium:** Pasteboard, wallpaper



**Title: Bandbox**  
**Medium:** Pasteboard, wallpaper



**Title:** Banister Back  
Arm Chair  
**Primary Maker:** Michael  
Maps  
**Medium:** Maple, ash



**Title:** Banister Back  
Arm Chair  
**Medium:** Maple, and ash



**Title:** Banister Back  
Arm Chair  
**Medium:** Maple, and ash



**Title:** Banister Back  
Side Chair  
**Medium:** Maple



**Title:** Banister Back  
Side Chair  
**Medium:** Maple



**Title:** Banister Back  
Side Chair  
**Medium:** Maple



**Title:** Bare Trees in  
Winter  
**Primary Maker:** William  
Savery Bucklin  
**Medium:** Graphite and  
Charcoal on textured paper  
glued to thin card board



**Title:** Baseball Jersey  
**Primary Maker:** A.&M.  
Karagheusian Company  
**Medium:** Wool, wool felt,  
shell buttons, cotton braid



**Title:** Basket  
**Medium:** Reed





**Title: Basket**  
**Medium:** Ash, oak



**Title: Basket**  
**Medium:** Oak, ash



**Title: Basket**  
**Medium:** Oak, ash



**Title: Basket**  
**Medium:** Oak, ash



**Title: Basket with Handle**  
**Medium:** Ash, oak



**Title: Bataille de la Marne Medal**  
**Primary Maker:** Jules Prosper Legastelois  
**Medium:** Bronze



**Title: Bathing Cap**  
**Primary Maker:** Kleinert's  
**Medium:** Rubber, latex, nylon



**Title: Bathing Suit**  
**Medium:** Cotton, elastic, nylon, steel zipper and hooks and eyes



**Title: Battle of Monmouth**  
**Primary Maker:** Robert Hinshelwood  
**Medium:** Steel engraving and watercolor on paper





**Title:** The Battle of Monmouth, 1778  
**Primary Maker:** John R. Chapin  
**Medium:** Oil on canvas



**Title:** Battle of Monmouth Map  
**Primary Maker:** John Graves Simcoe



**Title:** Beau Brummell, or Man's Dressing Table  
**Medium:** Rosewood shellacked to resemble mahogany



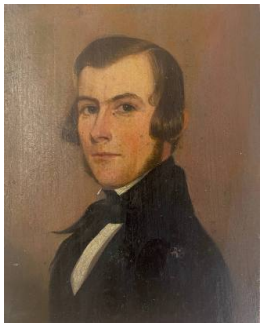
**Title:** Belgian War Orphans Medal  
**Primary Maker:** Jesue Dupon  
**Medium:** Bronze



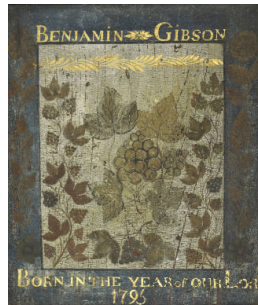
**Title:** Bellarmine Jug  
**Medium:** Salt-glazed stoneware



**Title:** Belt  
**Medium:** Tanned leather, brass buckle



**Title:** Benjamin DuBois Smock  
**Primary Maker:** George Henry Durrie  
**Medium:** Oil on wood



**Title:** Benjamin Gibson Birth Record  
**Primary Maker:** Unknown Artist  
**Medium:** Oil and gold leaf on wood panel



**Title:** Benjamin Minturn Hartshorne  
**Medium:** Daguerreotype



**Title:** Bessie  
**Hartshorne Williams**  
**Primary Maker:** Unknown  
**Artist**  
**Medium:** Watercolor on  
porcelain, gilt and velvet  
frame



**Title:** Bidet  
**Medium:** Mahogany, and  
hard pine



**Title:** Birch Forest,  
**Adirondacks**  
**Primary Maker:** William  
Savery Bucklin  
**Medium:** Pen and ink on  
paper



**Title:** Bird Bath and  
**Tree**  
**Primary Maker:** Henry  
Thomas Gulick  
**Medium:** Oil on masonite



**Title:** Birth Record of  
**John Mason**  
**Medium:** Watercolor, pen  
and ink on paper



**Title:** The Bivouac at  
**Monmouth**  
**Primary Maker:** John  
Chester Buttre  
**Medium:** Steel engraving  
on paper



**Title:** Black Beauty  
**Primary Maker:** George  
Ford Morris  
**Medium:** Oil on pressed  
millboard



**Title:** Blanket Chest  
**Medium:** Walnut, oak,  
chestnut, and tulip poplar



**Title:** Blanket Chest  
**Medium:** Cedar, and hard  
pine



**Title: Blanket Chest with Two Drawers**  
**Medium:** Tulip poplar and white pine



**Title: Block Puzzle**



**Title: Bonnet**  
**Medium:** Straw, wire, silk, gauze, buckram, ostrich feathers



**Title: Bonnet**  
**Medium:** Straw, wire, silk, gauze, buckram, ostrich feathers



**Title: Bonnet**  
**Medium:** Silk, buckram, wire, gauze



**Title: Bonnet**  
**Medium:** Silk, silk ribbon, wire, cardboard, buckram



**Title: Bonnet**  
**Medium:** Silk, wire, buckram, cardboard



**Title: Bonnet Basket**  
**Medium:** Dyed wicker, leather, brass, steel, paper



**Title: The Book Case of Instruction**  
**Medium:** Varnished pine, cardboard, pasteboard, paper



**Title: Bow Back Windsor Arm Chair**  
**Primary Maker:** Samuel Jaques  
**Medium:** Maple, pine, and ash



**Title: Bowback Windsor Settee**  
**Medium:** Ash, pine and maple



**Title: Bow Back Windsor Side Chair**  
**Primary Maker:** Thomas Cain  
**Medium:** Maple, tulip poplar, and ash



**Title: Bow Back Windsor Side Chair**  
**Primary Maker:** Samuel Jaques  
**Medium:** Maple, ash, and poplar seat



**Title: Bowl**  
**Medium:** Buff earthenware, tin glaze



**Title: Bowl**  
**Medium:** Buff earthenware, tin glaze



**Title: Bowl**  
**Medium:** Glazed stoneware



**Title: Bowl**  
**Medium:** Buff earthenware with tin glaze



**Title: Bowl**  
**Medium:** Earthenware

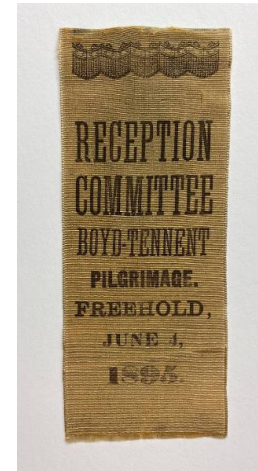




**Title: Bowl**  
**Medium:** Glazed earthenware



**Title: Box**  
**Medium:** Pine, leather, brass, iron



**Title: Boyd - Tennent Pilgrimage Badge**  
**Primary Maker:** Old Tennent Church  
**Medium:** Silk



**Title: Boy's Suit**  
**Medium:** Linen



**Title: Boy's Suit**  
**Medium:** Corded cotton, muslin, mother of pearl buttons



**Title: Boy's Suit**  
**Medium:** Velvet, metallic lace, cotton twill, silk



**Title: Breeches**  
**Medium:** Silk, linen, cotton



**Title: Brigadier General Roger Nelson**  
**Primary Maker:** James Peale  
**Medium:** Oil on porcelain, silver case



**Title: Broadside**  
**Primary Maker:** Barney & Co.  
**Medium:** Paper

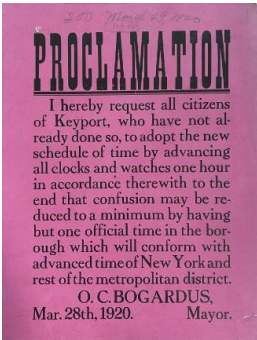




**Title: Broadside**  
**Medium: Paper**



**Title: Broadside**  
**Medium: Paper**



**Title: Broadside**  
**Medium: Paper**



**Title: Broadside**  
**Medium: Ink on paper**



**Title: Broadside**  
**Medium: Ink on paper**



**Title: Broken Bridge Over a Stream**  
**Primary Maker: William Savery Bucklin**  
**Medium: Graphite on paper**



**Title: Brooch**  
**Medium: Shell, gold**



**Title: Brooch**  
**Medium: Gold, enamel, seed pearls**



**Title: Brooch**  
**Medium: Jet, gold, seed pearls**



**Title:** Brown Family  
Birth Record  
**Medium:** Watercolor and  
iron gall ink on wove paper



**Title:** Brunswick, N.  
Jersey from the North  
**Primary Maker:** Archibald  
Robertson  
**Medium:** Ink on paper



**Title:** Bucket Hat  
**Medium:** Cotton canvas



**Title:** Buckle  
**Primary Maker:** Charles  
Liming  
**Medium:** Brass



**Title:** Bugle  
**Medium:** Brass



**Title:** Bulb Pot and Tray  
**Medium:** Earthenware



**Title:** Bye Lo Baby  
**Medium:** Bisque porcelain,  
composition, cotton, cotton  
batting



**Title:** Calash  
**Medium:** Silk, linen, reed



**Title:** California Sand  
Bluff and Moonlight  
**Primary Maker:** William  
Savery Bucklin  
**Medium:** Graphite on paper



**Title: Campaign Axe**  
**Medium: Sheet iron, pine**



**Title: Campaign Lanterns**  
**Medium: Tin, painted wood, paper**



**Title: Campaign Parade Torch**  
**Medium: Cut sheet tin, steel wire**



**Title: Candlestand**  
**Medium: Cherry, pine**



**Title: Candlestand**  
**Medium: Walnut**



**Title: Candlestand**  
**Medium: Mahogany and cherry**



**Title: Candlestand**  
**Medium: Mahogany**



**Title: Candlestand**  
**Medium: Walnut**



**Title: Candlestand**  
**Medium: Mahogany**



**Title: Candlestand**  
**Medium: Maple**



**Title: Candlesticks, pair**  
**Medium: Feldspathic white stoneware with smear glaze, polychrome enamels**



**Title: Candy Kettle**  
**Medium: Copper**



**Title: Canteen**  
**Medium: Oak, iron, tin**



**Title: Canteen**  
**Medium: Oak, iron, tin**



**Title: Cap**  
**Medium: Linen, cotton**



**Title: Captain Edward Taylor**  
**Primary Maker: Abraham P. Demarest**  
**Medium: Pencil on paper**



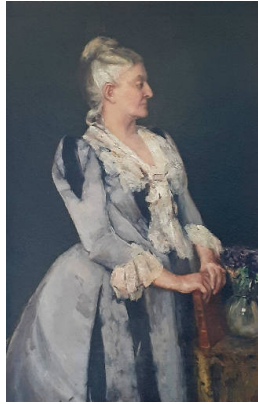
**Title: Captain James Lawrence for Martin N. Hulick**  
**Medium: Pen, ink and watercolor on paper**



**Title: Capt. Daniel J. Schanck**  
**Primary Maker: Micah Williams**  
**Medium: Oil on canvas**



**Title: Cardinal Mercier Medal**  
**Primary Maker:** Jules Prosper Legastelois  
**Medium:** Bronze



**Title: Caroline Gallup Reed**  
**Medium:** Oil on canvas



**Title: Carpet Bag**  
**Medium:** Wool, jute, linen, cotton, leather, steel, iron



**Title: Carpet Bag**  
**Medium:** Wool, cotton, linen, leather, steel



**Title: Carpet Bag**  
**Medium:** Wool, cotton, linen, steel, iron, leather



**Title: Carpet Label**  
**Primary Maker:** A. and M. Karagheusian  
**Medium:** Synthetic fibers



**Title: Carpet Sample**  
**Primary Maker:** A.&M. Karagheusian Company  
**Medium:** Wool, jute



**Title: Carpet Sample**  
**Primary Maker:** A.&M. Karagheusian Company  
**Medium:** Wool, jute



**Title: Carpet Sample**  
**Primary Maker:** A.&M. Karagheusian Company  
**Medium:** Wool, jute





**Title:** Carpet Sample  
**Primary Maker:** A. and M. Karagheusian  
**Medium:** Wool, jute



**Title:** Carpet Sample  
**Primary Maker:** A. and M. Karagheusian  
**Medium:** Wool, jute



**Title:** Carpet Sample  
**Primary Maker:** A. and M. Karagheusian  
**Medium:** Wool, jute



**Title:** Carpet Sample  
**Primary Maker:** A. and M. Karagheusian  
**Medium:** Wool, jute



**Title:** Carpet Sample  
**Primary Maker:** A. and M. Karagheusian  
**Medium:** Wool, jute



**Title:** Carpet Sample  
**Primary Maker:** A. and M. Karagheusian  
**Medium:** Wool, cotton canvas tape, latex rubber



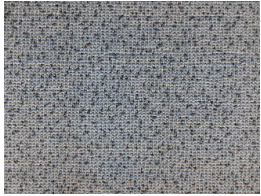
**Title:** Carpet Sample  
**Primary Maker:** A. and M. Karagheusian  
**Medium:** Wool, rubber, cotton canvas tape, latex



**Title:** Carpet Sample  
**Primary Maker:** A. and M. Karagheusian  
**Medium:** Wool, jute, cotton twill tape



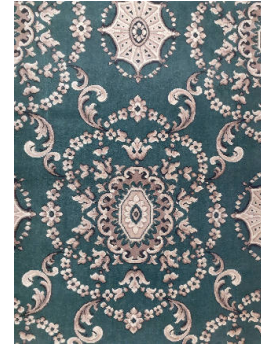
**Title:** Carpet Sample  
**Primary Maker:** A. and M. Karagheusian  
**Medium:** Wool, jute, cotton twill tape, cotton fringe



**Title:** Carpet Sample  
**Primary Maker:** A. and M. Karagheusian  
**Medium:** Wool, jute, cotton twill tape



**Title:** Carpet Sample  
**Primary Maker:** A. and M. Karagheusian  
**Medium:** Wool, jute, cotton



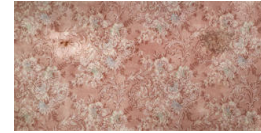
**Title:** Carpet Sample  
**Primary Maker:** A. and M. Karagheusian  
**Medium:** Wool, jute



**Title:** Carpet Sample  
**Primary Maker:** A. and M. Karagheusian  
**Medium:** Wool, jute, cotton twill tape



**Title:** Carpet Sample  
**Primary Maker:** A. and M. Karagheusian  
**Medium:** Wool, jute, cotton



**Title:** Carpet Sample  
**Primary Maker:** A. and M. Karagheusian  
**Medium:** Wool, jute, cotton



**Title:** Carpet Sample  
**Primary Maker:** A. and M. Karagheusian  
**Medium:** Wool, jute, cotton



**Title:** Carpet Sample  
**Case**  
**Primary Maker:** A. and M. Karagheusian  
**Medium:** Cardboard, plastic



**Title:** Cartridge Box  
**Primary Maker:** John Whitlock  
**Medium:** Leather, silver, brass, tin



**Title: Cash Box**  
**Medium:** Black painted tin, zinc, brass



**Title: Catherine Bedle Hendrickson**  
**Primary Maker:** Harvey Jenkins  
**Medium:** Oil on canvas



**Title: Catherine Holmes Stoutenborough**  
**Primary Maker:** Micah Williams  
**Medium:** Pastel on paper



**Title: Centennial Badge**  
**Medium:** Silk, metal alloy



**Title: Centennial Committee of Arrangements Ribbon**  
**Medium:** Ink on silk.



**Title: Century Run Medal**  
**Medium:** Silver



**Title: Ceremonial Apron**  
**Medium:** Lambskin, silk, silk brocade, cotton



**Title: Charles Minturn**  
**Medium:** Daguerreotype



**Title: Charles Morgan**  
**Primary Maker:** Micah Williams  
**Medium:** Oil on canvas





**Title:** Chatelaine  
**Medium:** Gold, lapis lazuli, paste brilliants, pearls



**Title:** Chelsea Baths Button  
**Primary Maker:** Sommer Badge Manufacturing Company  
**Medium:** Enameled metal



**Title:** Chest of Drawers  
**Primary Maker:** Samuel Peacock  
**Medium:** Birdseye and striped maple, maple veneer, sweet gum, and hard pine



**Title:** Chest of Drawers  
**Medium:** Walnut, hard pine, and white cedar



**Title:** Chest of Drawers  
**Medium:** Cherry, tulip poplar, and white pine with light wood inlay



**Title:** Chest on Chest  
**Medium:** Mahogany (by microanalysis), pine, and tulip poplar



**Title:** Child's Arrow Back Rocking Arm Chair  
**Primary Maker:** Pierson Thompson  
**Medium:** Maple, and ash



**Title:** Child's Boots  
**Date:** 1867  
**Medium:** Wool, leather, rabbit fur, silk ribbon.



**Title:** Child's Commode Chair  
**Medium:** Grain painted pine



**Title:** Child's Continuous Bow Windsor Arm Chair  
**Medium:** Maple, ash, and pine



**Title:** Child's Convertible High Chair  
**Medium:** Low grade mahogany and hard pine



**Title:** Child's Drop Leaf Table  
**Medium:** Walnut



**Title:** Child's Gown  
**Medium:** Silk



**Title:** Child's Gown  
**Medium:** Plain woven cotton muslin



**Title:** Child's High Chair  
**Primary Maker:** John A. Clayton  
**Medium:** Maple, and ash



**Title:** Child's Rocking Commode Chair  
**Medium:** Hard pine



**Title:** Child's Rocking Commode Chair  
**Medium:** Red painted pine



**Title:** Child's Sack Back Windsor Arm Chair  
**Medium:** Maple, tulip poplar, and ash





**Title:** Child's Shoes  
**Medium:** Glazed leather, ribbed silk ribbon, linen



**Title:** Child's Side Chair  
**Medium:** Painted pine



**Title:** Child's Slat Back Arm Chair  
**Medium:** Cherry, and ash



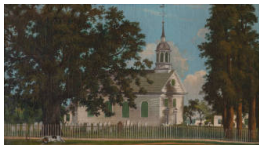
**Title:** Child's Slat Back Arm Chair  
**Medium:** Maple, and ash



**Title:** Child's Slat Back High Chair  
**Medium:** Maple, and ash



**Title:** Child's Slippers  
**Date:** 1841  
**Medium:** Leather, cotton.



**Title:** Christ Church, Shrewsbury  
**Primary Maker:** Unknown Artist  
**Medium:** Oil on canvas



**Title:** Christopher House, Freehold  
**Primary Maker:** Howard N. Cook  
**Medium:** Brown ink on tan paper



**Title:** Cigar Store Indian Maiden  
**Primary Maker:** Samuel Anderson Robb  
**Medium:** Polychromed and gilded white pine



**Title: Cloak**  
**Primary Maker:** Moyka Longstreet Reed  
**Medium:** Felted wool



**Title: Cloak**  
**Primary Maker:** James Reed  
**Medium:** Wool, velvet, steel



**Title: Cloak**  
**Medium:** Wool, silk



**Title: Closet and Bed Patent Model**  
**Medium:** Basswood, brass, cotton, cotton batting



**Title: Clothes for the Prisoners of War Medal**  
**Primary Maker:** Max Blondat  
**Medium:** Bronze



**Title: Clothes Press**  
**Primary Maker:** Oliver Parsell  
**Medium:** Cherry, mahogany veneer, tulip poplar, and pine



**Title: Clothes Press**  
**Primary Maker:** Fenwick Lyell  
**Medium:** Mahogany, mahogany veneer, tulip poplar, and white pine



**Title: Clothes Press**  
**Medium:** Walnut, white pine and tulip poplar



**Title: Clothes Press**  
**Medium:** Black walnut (by microanalysis), sweet gum, and white pine



**Title: Coat**  
**Medium:** Cotton, linen



**Title: Coat**  
**Medium:** Linsey woolsey, glazed cotton, brass buttons



**Title: Coat**  
**Medium:** Wool, glazed cotton, metal



**Title: Coat**  
**Medium:** Linen



**Title: Coat**  
**Medium:** Silk velvet, metallic silk brocade



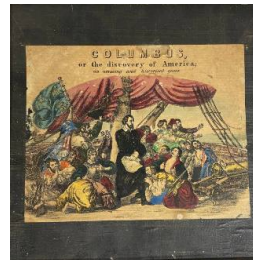
**Title: Cocktail Gown**  
**Medium:** Taffeta, cotton, nylon netting, crystal beading, sequins



**Title: Coffeepot**  
**Medium:** Stoneware



**Title: Coffin Model**  
**Primary Maker:** J.S. Throckmorton  
**Medium:** Painted pine, iron



**Title: Columbus Card Game**  
**Medium:** Paper, ink, metal



**Title: Comb**  
**Medium:** Nickel, zinc, copper



**Title: Combat Helmet**  
**Medium:** Steel, canvas, cotton, leather



**Title: Composition**  
**Primary Maker:** Marshall Simpson  
**Medium:** Oil on prepared masonite



**Title: Constable Badge**  
**Primary Maker:** Charles Wesley Roswell  
**Medium:** Silver plate



**Title: Continuous Bow Windsor Arm Chair**  
**Primary Maker:** John Sproson  
**Medium:** Maple and ash



**Title: Continuous Bow Windsor Arm Chair**  
**Medium:** Maple, ash, and pine



**Title: Continuous Bow Windsor Arm Chair**  
**Medium:** Maple and ash



**Title: Conversation Tube**  
**Medium:** Coiled-metal tubing, wool, hardened rubber



**Title: Cornelia Minturn**  
**Medium:** Watercolor on paper, glass, velvet and silk case frame





**Title:** Cornelius Zabriskie  
**Primary Maker:** Micah Williams  
**Medium:** Pastel on paper



**Title:** Corner Chamber Chair  
**Primary Maker:** William Savery  
**Medium:** Maple, and pine



**Title:** Corner Chamber Chair  
**Medium:** Cherry, and pine



**Title:** Corner Cupboard  
**Medium:** Walnut, and white pine



**Title:** Corner Cupboard  
**Medium:** Cherry, hard pine, mahogany veneer, maple and birch inlays



**Title:** Corner Cupboard  
**Medium:** Walnut, tulip poplar, and pine



**Title:** Corner Fireplace in Marlpit Hall  
**Primary Maker:** Julia Gulick Dodd  
**Medium:** Watercolor on paper



**Title:** Corner of the Phalanstery Building in Late Fall  
**Primary Maker:** William Savery Bucklin  
**Medium:** Graphite on paper glued to cardboard

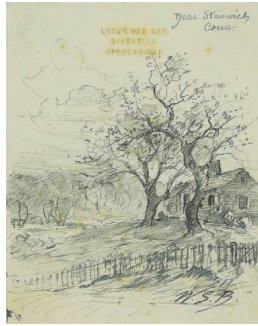


**Title:** Corn Field  
**Primary Maker:** William Savery Bucklin  
**Medium:** Graphite on paper





**Title:** Corset  
**Date:** 1875-1880  
**Medium:** Hot pink satin, white silk embroidery floss, white cotton, steel hardware.



**Title:** Cottage and Trees Near Stanwick, Connecticut  
**Primary Maker:** William Savery Bucklin  
**Medium:** Pen and ink on laid paper



**Title:** Cottage and Trees Near Stanwick, Connecticut  
**Primary Maker:** William Savery Bucklin  
**Medium:** Graphite on paper



**Title:** A Cottage in the Snowy Moonlight  
**Primary Maker:** William Savery Bucklin  
**Medium:** Graphite on paper



**Title:** Country Dance. Union Hall. Jersey  
**Primary Maker:** Edward Williams Clay  
**Medium:** Black ink on paper, with hand coloring



**Title:** The County of Edinburgh on the Beach  
**Primary Maker:** Antonio Jacobsen  
**Medium:** Oil on canvas



**Title:** Court House Bell  
**Medium:** Cast and wrought iron, bronze



**Title:** Cradle  
**Medium:** Walnut, and pine



**Title:** The Crawford House with Horses Lady Blanch and Little Fan  
**Primary Maker:** Alfred Eduard Beguin  
**Medium:** Oil on canvas with hand colored photographic insert



**Title: Crewel Embroidered Bed Hangings**

**Medium:** Plied crewel wool yarn and plied silk thread on linen and linen / cotton grounds



**Title: Crewel Embroidered Petticoat Border**

**Medium:** Plied wool crewel yarn on linen



**Title: Cribbage Counters**

**Medium:** Wood



**Title: Crock**

**Primary Maker:** Thomas Warne

**Medium:** Salt glazed stoneware



**Title: Crock**

**Primary Maker:** Hanteel Kemple

**Medium:** Salt glazed stoneware



**Title: Crock**

**Primary Maker:** Thomas Warne

**Medium:** Salt glazed stoneware



**Title: Crock**

**Primary Maker:** Charles C. Lawrence

**Medium:** Salt glazed stoneware



**Title: Crock**

**Medium:** Salt glazed stoneware



**Title: Crock**

**Medium:** Salt glazed stoneware



**Title: Crock**  
**Medium:** Salt glazed stoneware



**Title: Crock**  
**Medium:** Salt glazed stoneware



**Title: Crock**  
**Medium:** Salt glazed stoneware



**Title: Crock**  
**Medium:** Salt glazed stoneware



**Title: Crock**  
**Medium:** Salt glazed stoneware



**Title: Cufflinks**  
**Medium:** Gold



**Title: Cupboard**  
**Medium:** Tulip poplar, pine, and ash



**Title: The Cutter**  
**Genesta, R. Y. S.**  
**Primary Maker:** Currier & Ives  
**Medium:** Chromolithograph on paper



**Title: Cylinder Desk**  
**Medium:** Mahogany, mahogany veneer on hard pine, sweet gum, and tulip poplar



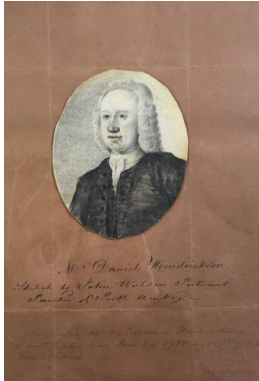
**Title: Dagger**  
**Medium:** Steel, bone, ebony



**Title: Daniel Conover**  
**Medium:** Pencil on paper



**Title: Daniel D. Hendrickson**  
**Primary Maker:** Harvey Jenkins  
**Medium:** Oil on canvas



**Title: Daniel Hendrickson**  
**Medium:** Graphite, pen and ink on cream paper mounted on brown paper



**Title: Daniel Hendrickson Self-Portrait**  
**Primary Maker:** Daniel Hendrickson  
**Medium:** Oil on canvas, backed originally with a wood panel



**Title: Daniel Holmes**  
**Primary Maker:** Harvey Jenkins  
**Medium:** Oil on canvas



**Title: David Wyckoff Hendrickson**  
**Primary Maker:** Harvey Jenkins  
**Medium:** Oil on canvas



**Title: Day Cap**  
**Medium:** Cotton batiste



**Title: Deborah Scott Little**  
**Primary Maker:** Micah Williams  
**Medium:** Pastel on paper





**Title:** Deborah Voorhees Grover  
**Primary Maker:** Harvey Jenkins  
**Medium:** Oil on canvas



**Title:** DeLafayette Schenck  
**Primary Maker:** Micah Williams  
**Medium:** Pastel on paper



01113 A  
A. & M. Karagheusian, Inc.

**Title:** Design For a Rug  
**Primary Maker:** A. and M. Karagheusian  
**Medium:** Gouache over graphite on watercolor paper



**Title:** Design for a Rug  
**Primary Maker:** A. and M. Karagheusian  
**Medium:** Gouache over graphite on heavy watercolor paper

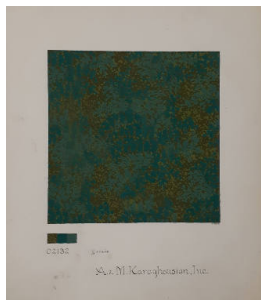


**Title:** Design for a Rug  
**Primary Maker:** A. and M. Karagheusian  
**Medium:** Gouache over graphite on cardstock paper



01113 A  
A. & M. Karagheusian, Inc.

**Title:** Design for a Rug  
**Primary Maker:** A. and M. Karagheusian  
**Medium:** Gouache over graphite on heavy watercolor paper



**Title:** Design for a Rug  
**Primary Maker:** A. and M. Karagheusian  
**Medium:** Gouache over graphite on heavy watercolor paper



3465-B

**Title:** Design for a Rug  
**Primary Maker:** A. and M. Karagheusian  
**Medium:** Gouache over graphite on heavy watercolor paper



**Title:** Design for a Rug  
**Primary Maker:** A. and M. Karagheusian  
**Medium:** Gouache on gray paper mounted on pink paper



**Title: Desk and Bookcase**

**Primary Maker:** William Applegate  
**Medium:** Mahogany, mahogany veneer, poplar, and pine



**Title: Desk and Bookcase**

**Medium:** Cherry, tulip poplar, and white cedar



**Title: Desk and Bookcase**

**Medium:** Cherry, pine, poplar, and mahogany



**Title: Detective Badge**

**Primary Maker:** Millstone & Manalapan Pursuing and Detective Co.  
**Medium:** Brass



**Title: Dish**

**Medium:** Earthenware



**Title: Doll**

**Medium:** Cloth



**Title: Doll**

**Medium:** Composition, cotton, sawdust



**Title: Doll**

**Medium:** Painted wood, wool, cotton, leather



**Title: Doll**

**Medium:** Painted composition head, wood, sawdust, leather, paper, velvet, cotton netting, silk



**Title: Doll**

**Medium:** Composition, wood, kid leather, cotton, cotton gauze



**Title: Doll**

**Medium:** Bisque porcelain, composition, glass; silk, satin, cotton, lace, leather, metal



**Title: Doll**

**Medium:** Papier mache, kid leather, sawdust, cotton, silk, lace, human hair, coral



**Title: Doll**

**Medium:** Parian (bisque) porcelain, cotton, sawdust, silk gauze, silk, leather



**Title: Doll Chair**

**Medium:** Maple, ash, rush



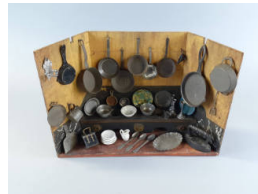
**Title: Doll Cradle**

**Medium:** Cherry, pine



**Title: Dollhouse**

**Medium:** Pine, maple, poplar, and other woods, silk, cotton, steel, brass, electrical wire, glass



**Title: Doll's Kitchen**

**Medium:** Pine, tin, brass; glazed ceramic, tin, brass, lead



**Title: Dolman Cape**

**Medium:** Corded silk, plain silk, silk and cotton lace, cotton cording, silk tassels



**Title: Dolman Cape**  
**Medium:** Silk plush velvet, plain woven silk, satin, cotton



**Title: Dolman Cape**  
**Medium:** Silk brocade, silk velvet, cotton



**Title: Dolman Coat**  
**Medium:** Wool, cotton, silk



**Title: Dolman or Fitted Cape**  
**Medium:** Heavy corded silk, plain silk, silk and cotton lace, jet beading, steel



**Title: Domed Chest**  
**Medium:** White pine



**Title: Dorothea Remsen Brinckerhoff**  
**Primary Maker:** Unknown Artist  
**Medium:** Oil on canvas



**Title: Dough Box on Stand**  
**Medium:** Resinous pine, and oak



**Title: Dram Flask**  
**Primary Maker:** Johann Christoph Heyne  
**Medium:** Pewter



**Title: Dress**  
**Primary Maker:** Ann Lowe  
**Medium:** Satin, silk, velvet, buckram, grosgrain, steel boning, elastic, lace





**Title: Dress**  
**Primary Maker:** Isabel  
Arnold  
**Medium:** Silk georgette,  
silk, lace



**Title: Dress**  
**Primary Maker:** Rudi  
Gernreich  
**Medium:** Polyester knit



**Title: Dress**  
**Medium:** Cotton



**Title: Dress**  
**Medium:** Chiffon, synthetic  
satin



**Title: Dress**  
**Medium:** Silk, glazed  
cotton, linen



**Title: Dress**  
**Medium:** Silk, muslin



**Title: Dress**  
**Medium:** Wool, velvet



**Title: Dress**  
**Medium:** Printed cotton,  
wooden buttons



**Title: Dress**  
**Medium:** Silk, silk crepe



**Title: Dress**  
**Medium:** Cotton gauze, silk, glazed cotton



**Title: Dress**  
**Medium:** Synthetic velvet, cotton, acetate ribbon



**Title: Dress**  
**Medium:** Silk, glazed cotton, embroidered and woven silk ribbons



**Title: Dress**  
**Medium:** Cotton batiste



**Title: Dress**  
**Medium:** Corded silk, cotton velvet, muslin, glazed cotton, lace



**Title: Dress**  
**Medium:** Wool knit, plastic sequins, goldtone metal studs, steel zipper, cotton



**Title: Dress**  
**Medium:** Printed cotton, linen



**Title: Dress**  
**Medium:** Striped and printed cotton gauze, linen, cotton



**Title: Dress**  
**Medium:** Silk taffeta, glazed cotton, silk ribbon



**Title: Dress.**  
**Medium:** Silk taffeta,  
glazed cotton, whalebone,  
silk fringe



**Title: Dress**  
**Medium:** Silk, glazed linen,  
cotton

**Title: Dress**  
**Medium:** Silk taffeta, cotton

**Title: Dress**  
**Medium:** Wool challis,  
linen, silk, brass



**Title: Dress**  
**Medium:** Printed linen  
/cotton blend



**Title: Dress**  
**Medium:** Lightweight woven  
barred cotton gauze in a  
printed pattern, glazed  
brown cotton

**Title: Dress**  
**Medium:** Cotton



**Title: Dress**  
**Medium:** Cotton batiste



**Title: Dress**  
**Medium:** Cotton muslin,  
cotton net



**Title: Dress**  
**Medium:** Plain woven silk  
taffeta, linen



**Title: Dress**  
**Medium:** Cotton mull, linen



**Title: Dress**  
**Medium:** Silk, silk fringe,  
rhinestones



**Title: Dress**  
**Medium:** Cotton



**Title: Dress**  
**Medium:** Cotton velvet,  
cotton, wool



**Title: Dressing Gown**  
**Medium:** Printed cotton  
chintz, glazed cotton



**Title: Dressing Gown**  
**Medium:** Cotton



**Title: Dressing Gown**  
**Medium:** Silk, lace, cotton



**Title: Dressing Table**  
**Medium:** Cherry and hard  
pine





**Title: Dressing Table**  
**Medium:** Mahogany, hard pine, and tulip poplar



**Title: Dressing Table**  
**Medium:** Cherry, tulip, and hard pine



**Title: Dressing Table**  
**Medium:** Walnut and hard pine



**Title: Dressing Table**  
**Medium:** Cherry, walnut, and hard pine



**Title: Dressing Table**  
**Medium:** Walnut, tulip poplar, and hard pine



**Title: Dr. Jacobus Hubbard Jr.**  
**Primary Maker:** Micah Williams  
**Medium:** Pastel on paper



**Title: Dr. John E. Stillwell**  
**Primary Maker:** Robert Lee Keeling  
**Medium:** Watercolor on ivory, gold case



**Title: Drop Leaf Table**  
**Medium:** Walnut, hard pine, and oak



**Title: Drop Leaf Table**  
**Medium:** Unidentified ring-porous hardwood and oak



**Title: Drop Leaf Table**  
**Medium:** Walnut, oak, and tulip poplar



**Title: Drop Leaf Table**  
**Medium:** Walnut, oak, and hard pine



**Title: Drum**  
**Primary Maker:** Joseph LaMotte  
**Medium:** Pine, maple, ash, cotton cord, leather



**Title: Duster Coat**  
**Medium:** Linen, cotton



**Title: Earrings**  
**Medium:** Artificial tortoiseshell, gold filled wire



**Title: Earrings**  
**Medium:** Vulcanite, steel



**Title: East Freehold School Medal**  
**Medium:** Silver



**Title: E.C. Hazard & Co. Dominos**  
**Primary Maker:** E.C. Hazard & Co.  
**Medium:** Pine



**Title: Edward Matthews as a Young Boy**  
**Primary Maker:** Unknown Artist  
**Medium:** Oil on wood panel



**Title:** Edward Minturn  
**Medium:** Daguerreotype



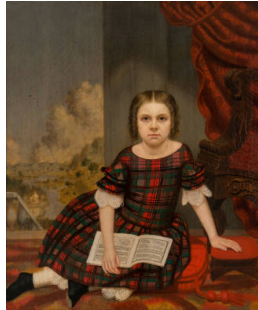
**Title:** Edward Taylor  
**Medium:** Oil on canvas



**Title:** Egg Basket  
**Medium:** Pine, maple, oak;  
steel, iron; cardboard



**Title:** Eleanor (Nelly)  
Conover Schenck  
**Primary Maker:** Micah  
Williams  
**Medium:** Pastel on paper



**Title:** Eleanor S.  
Conover  
**Primary Maker:** Harvey  
Jenkins  
**Medium:** Oil on canvas



**Title:** Eleanor Taylor  
Lyell  
**Medium:** Oil on canvas



**Title:** Election Badge  
**Medium:** Silk, brass



**Title:** Elizabeth "Betty"  
Dorn  
**Primary Maker:** Elizabeth  
"Betty" Dorn  
**Medium:** Graphite on paper



**Title:** Elizabeth  
Blackwell Morgan  
**Primary Maker:** Unknown  
Artist  
**Medium:** Oil on canvas



**Title:** Elizabeth Lawrence (Mrs. William) Hartshorne  
**Medium:** Watercolor on ivory in gold, colorless glass



**Title:** Ellen Conover Wikoff  
**Primary Maker:** Unknown Artist  
**Medium:** Oil on ivory, colorless glass, metal, wood, cardboard



**Title:** Embroidered Mourning Picture  
**Primary Maker:** Catherine L. Schanck  
**Medium:** Plied silk thread, watercolor, and gouache on silk with linen backing



**Title:** Embroidered Mourning Picture in Memory of Major General James Green  
**Medium:** Flat and chenille silk thread, printed silk, and watercolor on silk



**Title:** Embroidered Mourning Picture - the de Roldos / Leonard Family  
**Primary Maker:** Antoinette de Roldos  
**Medium:** Silk chenille thread, watercolor, ink and graphite on silk



**Title:** Embroidered Picture  
**Primary Maker:** Ann W. Little  
**Medium:** Silk embroidery thread, watercolor, and graphite on paper



**Title:** Embroidered Picture  
**Primary Maker:** Mary E. Forman  
**Medium:** Plied wool thread on linen



**Title:** Embroidered Picture  
**Medium:** Plied silk thread on linen ground



**Title:** Embroidered Picture - Belshazzar's Feast  
**Primary Maker:** Catherine L. Schanck  
**Medium:** Plied wool thread, graphite, watercolor and gouache on heavy paper, oil on linen





**Title:** Embroidered Picture - Dutch Reformed Church, Middletown, New Jersey  
**Medium:** Plied wool crewel yarn, plied silk thread and plied cotton thread on heavy perforated paper



**Title:** Embroidered Picture - Render Therefore Unto Caesar  
**Primary Maker:** Elizabeth Bowne  
**Medium:** Plied wool and silk threads on canvas



**Title:** Embroidered Pin Ball Cover  
**Medium:** Plied silk thread on coarse linen



**Title:** Embroidered Pocket  
**Medium:** Plied silk thread, silk, silk velvet, cotton cording, and chamois leather



**Title:** Embroidered Pocketbook  
**Primary Maker:** Mary Polhemus  
**Medium:** Wool, wool tape, linen, canvas, cardboard, and silk



**Title:** Embroidered Pocketbook  
**Primary Maker:** Hannah Crawford  
**Medium:** Silk, cardboard, linen, and cotton tape



**Title:** Embroidered Pocketbook  
**Primary Maker:** Deacon Family  
**Medium:** Plied silk thread, canvas, silk, and cardboard



**Title:** Embroidered Pocketbook  
**Medium:** Crewel wool, linen, twill tape, and heavy paper



**Title:** Embroidered Pocketbook  
**Medium:** Plied silk thread, cotton canvas, silk, and wool



**Title: Embroidered Pocketbook**

**Medium:** Silk, buckram, gold and silver thread, plied silk thread, and cotton velvet



**Title: Embroidered Potholder**

**Medium:** Plied silk thread on linen



**Title: Embroidered Square**

**Medium:** Plied silk thread, cotton, perforated paper, and silk



**Title: Embroidered Terrestrial Globe**

**Primary Maker:** Hume /Hulme Family  
**Medium:** Ink and embroidered silk on linen, stuffed with wool



**Title: Embroidered Terrestrial Globe**

**Primary Maker:** Hannah E. Deacon  
**Medium:** Ink and embroidered silk on linen, stuffed with wool



**Title: Emeline Conover Story**

**Primary Maker:** Micah Williams  
**Medium:** Pastel on paper



**Title: Entrance to Irving Bacheller Forest  
Adirondack Camp**

**Primary Maker:** William Savery Bucklin  
**Medium:** Pen and ink on paper mounted on cardboard



**Title: Epaulets and Box**

**Medium:** Steel, brass, cotton, bullion wire, cardboard



**Title: Evening Coat**

**Medium:** Wool, wool flannel, tissue silk, chiffon, Irish lace, velvet



**Title: Evening Coat**

**Medium:** Voided plush velvet, satin, lace, silk georgette



**Title: Evening Dress**

**Primary Maker:** Henriette Favre

**Medium:** Panné velvet, silk, silk organdy, lace, cotton, glass beads, silver metallic sequins, steel boning



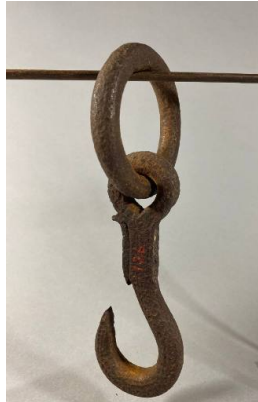
**Title: Evening Gown**

**Medium:** Silk velvet, voided silk velvet, cotton, silk



**Title: Evening Gown**

**Medium:** Silk satin, woven silk and metallic openweave, rhinestones and silvertone metal



**Title: Execution Hook**

**Medium:** Wrought iron



**Title: Fada Radio**



**Title: Fashion, The Property of William Gibbons New Jersey**

**Primary Maker:** Eugene Sintzenich

**Medium:** Black ink on paper



**Title: Fenwick Lyell**

**Medium:** Oil on canvas



**Title: Fiddleback Arm Chair**

**Primary Maker:** Hendrick Smock

**Medium:** Maple, ash, and tulip poplar



**Title:** Fiddleback Arm Chair  
**Medium:** Maple, ash



**Title:** Fiddleback Rocking Arm Chair  
**Medium:** Maple, ash, and pine



**Title:** Fiddleback Side Chair  
**Primary Maker:** Hendrick Smock  
**Medium:** Maple, ash, and tulip poplar



**Title:** Fiddleback Side Chair  
**Primary Maker:** Hendrick Smock  
**Medium:** Maple, ash, and tulip poplar



**Title:** Fiddleback Side Chair  
**Primary Maker:** Daniel Hendrickson  
**Medium:** Maple, and ash



**Title:** Fiddleback Side Chair  
**Medium:** Maple, and ash



**Title:** Field Bedstead  
**Primary Maker:** Alexander Low  
**Medium:** Maple, tulip poplar, and hard pine



**Title:** Field Day Badge  
**Medium:** Silk, metallic thread



**Title:** Field Jug  
**Medium:** Salt glazed stoneware





**Title:** Field, Trees, and Phalanx Outbuildings  
**Primary Maker:** William Savery Bucklin  
**Medium:** Graphite on paper glued to cardboard



**Title:** Finger Ring  
**Medium:** Gold, enamel, glass, human hair



**Title:** Fireback  
**Primary Maker:** Oxford Furnace  
**Medium:** Sand cast iron



**Title:** Fireback  
**Primary Maker:** Atsion Furnace  
**Medium:** Cast iron



**Title:** Fireboard  
**Medium:** Woodblock on paper, glued to plain woven linen canvas and mounted on pine strainer frame



**Title:** Fireboard  
**Medium:** Wallpaper panel glued to a pine strainer frame



**Title:** Fire Bucket  
**Primary Maker:** Resolution Fire Co.  
**Medium:** Leather



**Title:** Fireman's Uniform Belt  
**Medium:** Leather, steel



**Title:** Fishing for Trout on Louis Brook, Nova Scotia  
**Primary Maker:** William Savery Bucklin  
**Medium:** Graphite on paper



**Title: Flagpole Finial**

**Medium:** Gilded and gessoed white pine



**Title: Flashlight**

**Primary Maker:** C.B. Collins  
**Medium:** Steel, nickel, glass.



**Title: Flax Wheel Base**

**Primary Maker:** Alexander Low  
**Medium:** Cherry and perhaps maple



**Title: Fleams**

**Primary Maker:** Proctor  
**Medium:** Brass, steel



**Title: Florida Forest Scene with Palms**

**Primary Maker:** William Savery Bucklin  
**Medium:** Graphite on paper glued to card board



**Title: Florida Landscape with Palm Trees**

**Primary Maker:** William Savery Bucklin  
**Medium:** Graphite on paper



**Title: Foot Warmer**

**Medium:** Walnut, brass



**Title: Foot Warmer**

**Medium:** Pine, ash, tin, iron



**Title: Foot Warmer**

**Medium:** Buff colored earthenware with brown lead glaze



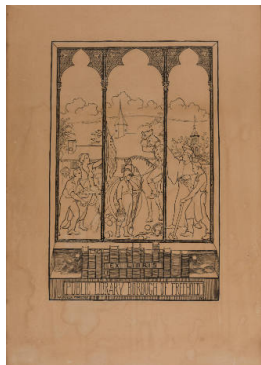
**Title:** Fort Monmouth  
Automobile Tag  
**Medium:** Plastic



**Title:** Freehold Court  
House, 1731  
**Primary Maker:** William C.  
Asman  
**Medium:** Ink on paper



**Title:** Freehold Driving  
Club Badge  
**Primary Maker:** Whitehead  
and Hoag Company  
**Medium:** Silk, brass,  
celluloid, paper



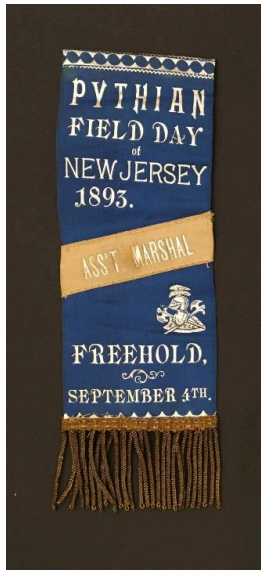
**Title:** Freehold Library  
Bookplate Drawing  
**Medium:** Ink on heavy  
paper mounted on  
cardboard



**Title:** Freehold Military  
School Medal  
**Medium:** Silver, grosgrain  
ribbon, brass



**Title:** Freehold Poor  
Chest  
**Medium:** Hard pine



**Title:** Freehold Pythian Field Day Badge  
**Primary Maker:** Whitehead and Hoag Company  
**Medium:** Silk, metallic thread



**Title:** Freehold Young Ladies Seminary Badge  
**Primary Maker:** Georgiana Souther Barrows  
**Medium:** Silk



**Title:** The Front Door  
**Primary Maker:** Henry Thomas Gulick  
**Medium:** Oil on masonite



**Title:** Front Door and Flower Beds  
**Primary Maker:** Henry Thomas Gulick  
**Medium:** Oil on masonite



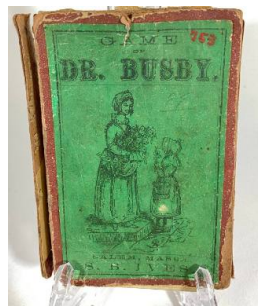
**Title:** The Frost Farm  
**Primary Maker:** Kate C. Frost  
**Medium:** Oil on canvas



**Title:** Fry Pan  
**Primary Maker:** John J. Rogers  
**Medium:** Iron



**Title:** Gambling Chip  
**Primary Maker:** Phil Daly's Pennsylvania Club  
**Medium:** Clay



**Title:** Game of Dr. Busby  
**Primary Maker:** S.B. Ives  
**Medium:** Paper



**Title:** Gaming Table  
**Medium:** Mahogany, and striped maple





**Title: Gaming Table**  
**Medium:** Mahogany, hard pine, and tulip poplar



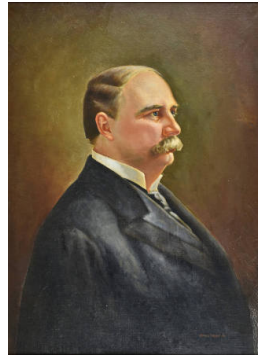
**Title: Gang Bullet Mold**  
**Medium:** Soapstone



**Title: Garden Cloche**  
**Medium:** Colorless glass



**Title: GAR Freehold Post Badge**  
**Medium:** Silk, aluminum, metal alloy, metallic thread



**Title: Garret Augustus Hobart**  
**Primary Maker:** James Birnie Jr.  
**Medium:** Oil on canvas



**Title: Gateleg Table**  
**Medium:** Walnut, and oak



**Title: Gateleg Trestle Table**  
**Primary Maker:** Thomas Warne  
**Medium:** Walnut, sweet gum, and hard pine



**Title: Gateleg Trestle Table**  
**Medium:** Cherry, and oak



**Title: General Clinton's Headquarters**  
**Primary Maker:** Maude Applegate Smith Moreau  
**Medium:** Oil on canvas



**Title:** General La Fayette  
**Primary Maker:** Nathaniel Currier  
**Medium:** Lithograph with hand coloring



**Title:** General Pershing Medal  
**Primary Maker:** Jules Prosper Legastelois  
**Medium:** Bronze



**Title:** General White's, Brunswick  
**Primary Maker:** Archibald Robertson  
**Medium:** Ink on paper



**Title:** George Heberton III  
**Primary Maker:** Bass Otis  
**Medium:** Oil on canvas



**Title:** George Washington Inaugural Button  
**Medium:** Copper



**Title:** Gertrude Woodcock Simpson  
**Primary Maker:** William Percy Couse  
**Medium:** Oil on masonite



**Title:** Gettysburg Reunion Medal  
**Medium:** Iron



**Title:** Gift Cup  
**Medium:** White earthenware



**Title:** Gift Cup  
**Medium:** White earthenware



**Title:** Gift Cup  
**Medium:** White earthenware



**Title:** Gift Cup  
**Medium:** White earthenware



**Title:** Gift Cup  
**Medium:** White earthenware



**Title:** Gift Cup  
**Medium:** White earthenware



**Title:** Gift Cup  
**Medium:** White earthenware



**Title:** Gift Cup  
**Medium:** White earthenware



**Title:** Gift Cup  
**Medium:** White earthenware

**Title:** Gift Cup  
**Medium:** White earthenware

**Title:** Gift Cup  
**Medium:** White earthenware



**Title:** Gilbert Van Mater  
**Primary Maker:** Micah Williams  
**Medium:** Pastel on paper



**Title:** Gloves  
**Medium:** Wool



**Title:** Goblet  
**Medium:** Earthenware, copper luster



**Title:** Gouverneur Morris  
**Primary Maker:** Unknown Artist  
**Medium:** Oil on canvas



**Title:** Gown  
**Medium:** Silk satin, cotton, buckram, linen



**Title:** Gown  
**Medium:** Silk, cotton, steel



**Title:** Gown  
**Medium:** Lightweight silk brocade, linen



**Title:** Gown  
**Medium:** Silk taffeta, cotton, lace, silk fringe, linen



**Title:** Gown  
**Medium:** Silk taffeta, glazed cotton, linen, whalebone, silk fringe



**Title: Gown**  
**Medium:** Cotton, linen



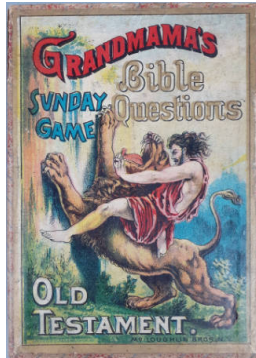
**Title: Gown and Matching Jacket**  
**Medium:** Silk taffeta, cotton, silk velvet



**Title: Gown and Pantaloons**  
**Medium:** Cotton crepe, cotton, silk ribbon



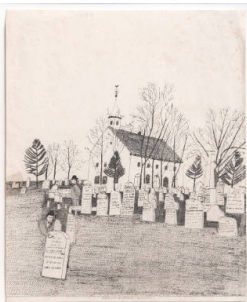
**Title: Grand Army of the Republic Commemorative Badge, 1912**  
**Medium:** Bronze, silk



**Title: Grandmama's Sunday Game: Old Testament Bible Questions**  
**Medium:** Cardboard, chromolithograph on paper



**Title: Grape Shot and Storage Bag**  
**Medium:** Lead; linen



**Title: Grave Yard of Old Tennent Church**  
**Primary Maker:** John D. Quackenbush  
**Medium:** Photo-lithograph enhanced with graphite and ink



**Title: Grisaille Painted Kast**  
**Medium:** Red gum, American tulip, and hard pine (identified by microanalysis at Winterthur in 1977)



**Title: Gulick Farmhouse from the West**  
**Primary Maker:** Henry Thomas Gulick  
**Medium:** Oil on cardboard



**Title:** Handkerchief  
**Medium:** Printed cotton



**Title:** Handkerchief  
**Medium:** Copper plate printed linen



**Title:** Hanging Cupboard  
**Medium:** Painted oak with yellow pine shelves and bottom board, the latter determined by microanalysis



**Title:** Harold McDermott  
**Primary Maker:** John Simone  
**Medium:** Oil on canvas



**Title:** Harriet Ann Hitchens  
**Primary Maker:** Robert Street  
**Medium:** Oil on canvas



**Title:** Harriet Mackie, "The Dead Bride"  
**Primary Maker:** Jean Francois de Vallee  
**Medium:** Watercolor on ivory



**Title:** Harriet Throckmorton  
**Primary Maker:** Unknown Maker  
**Medium:** Watercolor on vellum, colorless glass, red leather case, white silk, white plush velvet, metal.



**Title:** Harrison Gardiner Wright  
**Primary Maker:** James Martin  
**Medium:** Pastel on paper



**Title:** Harry Bassett and Longfellow  
**Primary Maker:** Unknown Artist  
**Medium:** Chromolithograph on paper



**Title:** Hartshorne Burying Ground and Franklin Academy  
**Primary Maker:** Henry Thomas Gulick  
**Medium:** Oil on masonite



**Title:** Hartshorne House  
**Primary Maker:** Nina Hepburn  
**Medium:** Charcoal



**Title:** The Haskell Barn  
**Medium:** Oil on canvas



**Title:** Hat  
**Primary Maker:** J. R. Hall  
**Medium:** Silk plush, grosgrain ribbon, leather, paper



**Title:** Hat  
**Primary Maker:** Annette  
**Medium:** Wire form, netting, silk, silk and paper flowers



**Title:** Hat  
**Primary Maker:** Knox  
**Medium:** Black twilled silk, metal



**Title:** Hat  
**Primary Maker:** Knox  
**Medium:** Silk plush, silk, grosgrain, leather



**Title:** Hat  
**Primary Maker:** Knox  
**Medium:** Felted wool, silk, grosgrain, silk



**Title:** Hat  
**Medium:** Felted wool, leather, silk



**Title: Hat**  
**Medium:** Netting, silk, wire, paper



**Title: Hat**  
**Medium:** Straw, grosgrain ribbon, netting, acetate silk



**Title: Hat**  
**Medium:** Silk, lace, ostrich feathers, braided straw



**Title: Hat**  
**Medium:** Silk, satin, silk plush velvet, buckram, wire, ostrich feathers, net lace



**Title: Hat**  
**Medium:** Plush silk velvet, silk, net lace, grosgrain ribbon, buckram, wire; silk, velvet, paper and wire artificial flowers



**Title: Hat**  
**Medium:** Synthetic fur, acetate satin



**Title: Hat**  
**Medium:** Straw



**Title: Hat**  
**Medium:** Polyester, cotton, paper, rayon, silk



**Title: Head Majorette High School Varsity Jacket**  
**Medium:** Wool, glazed cotton, brass zipper





**Title:** Henry Glisson  
**Primary Maker:** Unknown  
**Artist**  
**Medium:** Watercolor on ivory



**Title:** The Heroes of Verdun Medal  
**Primary Maker:** Charles Pillet  
**Medium:** Bronze



**Title:** The Heroine of Monmouth  
**Primary Maker:** Currier & Ives  
**Medium:** Lithograph on paper



**Title:** High Back Windsor Arm Chair  
**Medium:** Ash and maple, with tulip poplar seat and oak arm terminals



**Title:** High Back Windsor Arm Chair  
**Medium:** Tulip seat, maple legs and stretchers, and ash above the seat



**Title:** High Back Windsor Arm Chair  
**Medium:** Maple and ash



**Title:** High Chest  
**Medium:** Cherry and hard pine



**Title:** High Chest  
**Medium:** Cherry, tulip, and hard pine



**Title:** High Chest  
**Medium:** Cherry, maple, and white pine (the last per wood analysis by Winterthur in 1977)



**Title:** The Highlands of the Neversink and the Twin Lights  
**Primary Maker:** Unknown Artist  
**Medium:** Oil on canvas



**Title:** High Post Bed  
**Medium:** Tiger maple and maple



**Title:** Historical Panorama  
**Medium:** Cardboard, paper, ink



**Title:** Holmes-Hendrickson House  
**Primary Maker:** Henry Thomas Gulick  
**Medium:** Oil on masonite



**Title:** Hooded Cradle  
**Medium:** Walnut, and pine



**Title:** The Hooper Farm  
**Primary Maker:** Unknown Artist  
**Medium:** Oil on canvas



**Title:** Horn Cup  
**Primary Maker:** Daniel Denise  
**Medium:** Cow horn, wood, iron



**Title:** The Horse Betty K.  
**Primary Maker:** B. J. or J. B. Hackett  
**Medium:** Watercolor and gouache over graphite on paper, with a photographic fragment on paper attached



**Title:** The Horse Fair  
**Primary Maker:** Henry Thomas Gulick  
**Medium:** Charcoal on paper



**Title:** The Horse Modoc  
**Primary Maker:** Unknown  
**Artist**  
**Medium:** Oil on artist's board



**Title:** House at Phalanx  
**Primary Maker:** William Savery Bucklin  
**Medium:** Graphite on paper glued to cardboard



**Title:** Howell Furnace  
**Primary Maker:** Unknown  
**Artist**  
**Medium:** Ink wash on paper



**Title:** Howell Works Script Plate  
**Primary Maker:** Howell Iron Works  
**Medium:** Bronze on wooden block



**Title:** Hudson - Fulton Celebration Commemorative Medal  
**Primary Maker:** Emil Fuchs  
**Medium:** Bronze



**Title:** Huldah Holmes Longstreet  
**Primary Maker:** Harvey Jenkins  
**Medium:** Oil on canvas



**Title:** Iceboating on the South Shrewsbury River  
**Primary Maker:** Victor Gilsey  
**Medium:** Oil on canvas



**Title:** Identification Tag  
**Primary Maker:** Elias Peacock Schenck  
**Medium:** Silver



**Title:** Infant Rattle  
**Primary Maker:** George Unite  
**Medium:** Silver, coral



**Title:** Interior - Senator Hendrickson's Barn  
**Primary Maker:** Henry Thomas Gulick  
**Medium:** Oil on masonite



**Title:** Jail Cell Key  
**Medium:** Iron



**Title:** James A. Perrine and his son Aaron Crossing a Field in an Open Carriage  
**Primary Maker:** Alessandro E. Mario  
**Medium:** Oil on canvas



**Title:** James. A. Perrine and son Aaron in front of their Home in Manalapan, NJ  
**Primary Maker:** Alessandro E. Mario  
**Medium:** Oil on canvas



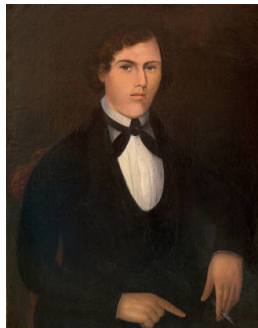
**Title:** James Grover  
**Primary Maker:** Harvey Jenkins  
**Medium:** Oil on canvas



**Title:** James Holmes Hendrickson  
**Primary Maker:** Harvey Jenkins  
**Medium:** Oil on canvas



**Title:** James Lefferts Brinckerhoff  
**Primary Maker:** Unknown Artist  
**Medium:** Oil on canvas



**Title:** James Patterson Crawford  
**Primary Maker:** John Bradley  
**Medium:** Oil on canvas



**Title:** James Wall Schureman  
**Primary Maker:** Albert Tracy  
**Medium:** Oil on canvas





**Title:** Jar  
**Medium:** Salt glazed stoneware



**Title:** Jersey Shore #2  
**Primary Maker:** Maxwell Stewart Simpson  
**Medium:** Oil on canvas



**Title:** John Schanck  
**Primary Maker:** Micah Williams  
**Medium:** Pastel on paper



**Title:** John Stoutenborough  
**Primary Maker:** Micah Williams  
**Medium:** Pastel on paper



**Title:** John Wikoff  
**Primary Maker:** John Wollaston  
**Medium:** Oil on canvas



**Title:** Jonathan Roelof Schenck  
**Primary Maker:** Micah Williams  
**Medium:** Pastel on paper



**Title:** Joseph Brakeley Can  
**Date:** 1900-1915  
**Primary Maker:** Joseph Brakeley, Inc.  
**Medium:** Tin, paper.



**Title:** Joseph Conover Gulick's House  
**Primary Maker:** Henry Thomas Gulick  
**Medium:** Oil on masonite



**Title:** Joseph C. Van Mater  
**Primary Maker:** Micah Williams  
**Medium:** Pastel on paper



**Title:** Josephine Terry McKinney  
**Primary Maker:** Unknown Artist  
**Medium:** Oil on canvas



**Title:** Jug  
**Primary Maker:** William A. Lowe  
**Medium:** Salt glazed stoneware



**Title:** Jug  
**Medium:** Salt glazed stoneware



**Title:** Jug  
**Medium:** Salt glazed stoneware



**Title:** Jug  
**Medium:** Salt glazed stoneware



**Title:** Jug  
**Medium:** Salt glazed stoneware



**Title:** Julia Norton Hartshorne  
**Primary Maker:** Unknown Artist  
**Medium:** Oil on canvas



**Title:** Julia Norton (Mrs. Benjamin Minturn) Hartshorne  
**Medium:** Watercolor on ivory in gold, colorless glass



**Title:** Kast  
**Primary Maker:** Matthew Egerton Jr.  
**Medium:** Sweet gum (identified through microanalysis in 1979 by the U. S. Department of Agriculture in Madison, WI), white and yellow pine secondary woods, and walnut applied panels



**Title: Kast**  
**Medium:** Red gum  
(determined by  
microanalysis), yellow  
pine, and tulip poplar



**Title: Kewpie Doll**  
**Medium:** Bisque porcelain,  
paper tag



**Title: Key**  
**Medium:** Brass



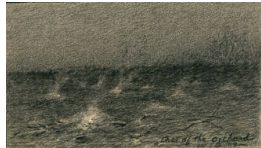
**Title: Keyport Fire  
Department Button**  
**Primary Maker:** Whitehead  
and Hoag Company  
**Medium:** Lithographed and  
printed enamel on metal



**Title: Kitchen at Merino  
Hill**  
**Primary Maker:** Unknown  
Artist  
**Medium:** Watercolor on  
paper



**Title: Kultur Medal**  
**Primary Maker:** Paul  
Manship  
**Medium:** Bronze



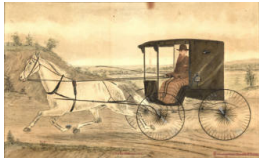
**Title: Last of the  
Orchard (Burning  
Brush in the Orchard)**  
**Primary Maker:** William  
Savery Bucklin  
**Medium:** Charcoal and  
graphite on paper mounted  
on cardboard



**Title: Laura Stillwell**  
**Primary Maker:** Unknown  
Artist  
**Medium:** Oil on canvas



**Title: Life Vest**  
**Medium:** Rubberized  
canvas, cotton webbing,  
steel, zinc, rubber tubing



**Title:** Little Dancing Jim  
**Primary Maker:** B. J. or J. B. Hackett  
**Medium:** Watercolor and gouache over graphite on paper, with a photographic fragment on paper attached



**Title:** Little Girl of the Woodfield Family  
**Primary Maker:** Micah Williams  
**Medium:** Pastel on paper



**Title:** Little Tobiatic Brook  
**Primary Maker:** William Savery Bucklin  
**Medium:** Graphite on paper



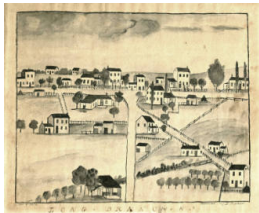
**Title:** The Living Room  
**Primary Maker:** Henry Thomas Gulick  
**Medium:** Oil on masonite



**Title:** Long Branch Beach Badge  
**Medium:** Plastic, metal



**Title:** Long Branch Fire Department Badge  
**Primary Maker:** Whitehead and Hoag Company  
**Medium:** Celluloid, silk



**Title:** Long Branch, N. J.  
**Primary Maker:** Joshua Parker  
**Medium:** Watercolor, gouache and ink on paper

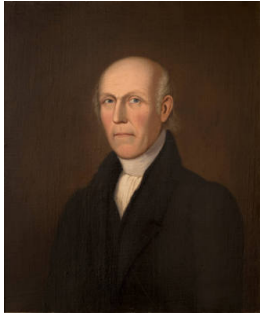


**Title:** Low Back Windsor Arm Chair  
**Medium:** Maple and ash



**Title:** The Lusitania (German) Medal  
**Medium:** Diecast Iron





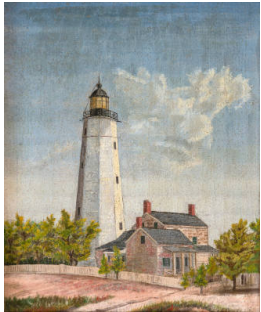
**Title:** Luther Halsey  
**Primary Maker:** Ammi Phillips  
**Medium:** Oil on canvas



**Title:** The Luyster Farm  
**Primary Maker:** David Provost Van Brackle  
**Medium:** Oil on paper mounted to a canvas backing



**Title:** Mahlon Dickerson  
**Primary Maker:** J. Parker  
**Medium:** Oil on wood panel



**Title:** Main Lighthouse, Sandy Hook: Southwest View  
**Primary Maker:** Franklin Patterson  
**Medium:** Oil on canvas



**Title:** Majorette's Uniform  
**Medium:** Synthetic satin, gilt braid, goldtone metal buttons, steel zipper, rabbit fur, cotton twill tape



**Title:** Majorette Uniform Hat  
**Medium:** Leather, plastic, goldtone metal, cotton



**Title:** Major John Samuel Holmes  
**Primary Maker:** Micah Williams  
**Medium:** Pastel on paper



**Title:** Manasquan Beach  
**Primary Maker:** George C. Lambdin  
**Medium:** Watercolor and gouache over graphite on paper



**Title:** Man's Court Suit  
**Medium:** Wool broadcloth, twilled silk, linen, gold bullion embroidery, spangles, sequins



**Title: Man's Waistcoat**  
**Date:** 1830-1850  
**Medium:** Silk, cotton, wool flannel.



**Title: Man's Waistcoat**  
**Date:** 1830-1850  
**Medium:** Silk, cotton, leather.



**Title: Man's Wedding Waistcoat**  
**Medium:** Silk brocade, glazed cotton twill, brass



**Title: Man with Cane and Top Hat**  
**Primary Maker:** Charles Fenderich  
**Medium:** Gouache and watercolor over graphite on paper



**Title: Man with Newspaper**  
**Primary Maker:** Unknown Artist  
**Medium:** Oil on canvas



**Title: Map of the Howell Works, Monmouth County**  
**Primary Maker:** Endicott & Co.  
**Medium:** Lithograph on paper with color added



**Title: Marble Game**



**Title: Margaret Priestly Williams**  
**Primary Maker:** Micah Williams  
**Medium:** Pastel on paper



**Title: Margaret Stoutenborough Hubbard**  
**Primary Maker:** Harvey Jenkins  
**Medium:** Oil on canvas



**Title:** Margaretta Bowne Crawford  
**Primary Maker:** John Bradley  
**Medium:** Oil on canvas



**Title:** Margaret Willis (Mrs. Robert) Hartshorne  
**Primary Maker:** Laura Hills  
**Medium:** Watercolor on ivory, gold, glass, velvet, leather



**Title:** Maria "Polly" Hopper Zabriskie  
**Primary Maker:** Micah Williams  
**Medium:** Pastel on paper



**Title:** Marlpit Hall - Taylor Homestead  
**Primary Maker:** Henry Thomas Gulick  
**Medium:** Oil on masonite



**Title:** Marshal Foch's Visit to the United States Medal  
**Primary Maker:** Charles Ingersoll Aitken  
**Medium:** Bronze



**Title:** Mary Ann Morris Borden  
**Primary Maker:** Harvey Jenkins  
**Medium:** Oil on canvas



**Title:** Mary Bowne Minturn  
**Medium:** Daguerreotype



**Title:** Mary Eleanor Van Mater  
**Primary Maker:** Harvey Jenkins  
**Medium:** Oil on bed ticking



**Title:** Mary Ellen Borden Hendrickson  
**Primary Maker:** Harvey Jenkins  
**Medium:** Oil on canvas





**Title:** Mary Grover Holmes Taylor  
**Medium:** Paper, silk



**Title:** Mary Hendrickson  
**Primary Maker:** Unknown  
**Artist:**  
**Medium:** Oil on canvas



**Title:** Mary H. Hendrickson and her Grandson Charles Stillwell  
**Primary Maker:** Harvey Jenkins  
**Medium:** Oil on striped bed ticking



**Title:** Mary Lord Craig Heberton  
**Primary Maker:** Bass Otis  
**Medium:** Oil on canvas



**Title:** Mary Minturn Hartshorne  
**Medium:** Daguerreotype



**Title:** Matawan Lodge Badge  
**Primary Maker:** Whitehead and Hoag Company  
**Medium:** Silk, celluloid, metal alloy, metallic thread



**Title:** Mechanical Bank  
**Primary Maker:** Shepard Hardware Co.  
**Medium:** Cast iron



**Title:** Mechanical Bank  
**Medium:** Painted cast iron



**Title:** Medallion  
**Medium:** Gold, brass, wax, human hair, seed pearls, glass, metallic thread





**Title:** Medal of Merit  
**Date:** ca. 1917  
**Primary Maker:** JK Davison,  
Philadelphia  
**Medium:** Bronze, copper,  
steel, silk grosgrain ribbon.



**Title:** Medicine Bottle  
**Medium:** Glass, paper



**Title:** Men Stacking Hay  
**Primary Maker:** William  
Savery Bucklin  
**Medium:** Graphite on paper  
mounted on cardboard



**Title:** Men's Waistcoat  
**Date:** 1830-1850  
**Medium:** Black silk, linen  
lining. Chamois leather  
lining panels left and right,  
front inside edges. Glazed  
brown cotton back and  
collar facing.



**Title:** Merino Hill  
Barnyard  
**Primary Maker:** Unknown  
Artist  
**Medium:** Watercolor on  
paper



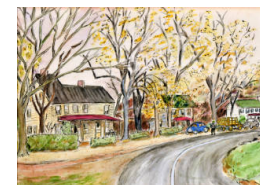
**Title:** Merino Hill Main  
Residence  
**Primary Maker:** Unknown  
Artist  
**Medium:** Watercolor on  
paper



**Title:** Micah Williams  
**Primary Maker:** Unknown  
Artist  
**Medium:** Oil on wood panel



**Title:** Middletown  
Blacksmith Shop  
**Primary Maker:** Julia Gulick  
Dodd  
**Medium:** Watercolor on  
paper



**Title:** Middletown  
Fourth Ward  
**Primary Maker:** Julia Gulick  
Dodd  
**Medium:** Watercolor on  
paper



**Title:** Midnight Storm on Wildcat Point, Nova Scotia  
**Primary Maker:** William Savery Bucklin  
**Medium:** Graphite on paper



**Title:** Milk Skimmer  
**Medium:** Tin



**Title:** Mills of Thomas Bennet Esq., Second River Near the Passaic River, N. Jersey  
**Primary Maker:** Archibald Robertson  
**Medium:** Ink on paper



**Title:** Millvale, Hunterdon County  
**Primary Maker:** Henry Thomas Gulick  
**Medium:** Oil on masonite



**Title:** Miniature Sampler  
**Medium:** Plied and single strand silk thread on cotton



**Title:** Miniature Sideboard  
**Medium:** Cedar, pine



**Title:** Mitts  
**Medium:** Linen



**Title:** Model of Horse Drawn Mower  
**Medium:** Painted and enameled brass, steel, iron



**Title:** Moll Pitcher at Monmouth  
**Primary Maker:** William H. Van Ingen  
**Medium:** Woodcut engraving on newsprint paper



**Title:** Moll Pitcher at the Battle of Monmouth  
**Primary Maker:** Unknown  
**Artist:**  
**Medium:** Oil on canvas



**Title:** Moll Pitcher at the Battle of Monmouth  
**Primary Maker:** John Rogers  
**Medium:** Engraving on paper with watercolor enhancements



**Title:** Moll Pitcher Being Presented to George Washington  
**Primary Maker:** Dennis Malone Carter  
**Medium:** Oil on canvas



**Title:** Molly Pitcher  
**Primary Maker:** Donald De Lue  
**Medium:** Bronze



**Title:** Molly Pitcher at the Battle of Monmouth  
**Primary Maker:** Unknown  
**Artist:**  
**Medium:** Oil on copper plaque



**Title:** Molly Pitcher Being Presented to George Washington  
**Primary Maker:** Unknown  
**Artist:**  
**Medium:** Oil on canvas



**Title:** Molly Pitcher Cookies Tin  
**Primary Maker:** Savory Baking Company  
**Medium:** Tin



**Title:** The Monarch of the Glen  
**Primary Maker:** Henry Thomas Gulick  
**Medium:** Charcoal on paper



**Title:** Monckton Sword and Scabbard  
**Medium:** Steel, wood, silver, leather





**Title:** Monmouth Battle Grounds, N. J.  
**Primary Maker:** James H. Smillie  
**Medium:** Engraving on paper



**Title:** Monmouth Battle Grounds, N. J.  
**Primary Maker:** Unknown Artist  
**Medium:** Pastel on art board



**Title:** Monmouth County Historical Association Badge  
**Primary Maker:** Whitehead and Hoag Company  
**Medium:** Silk ribbon, gilt bronze



**Title:** Monmouth Court-House in 1778  
**Primary Maker:** Carrie A. Bowne Swift  
**Medium:** Oil on art board



**Title:** Monmouth Court House in 1778  
**Primary Maker:** Unknown Artist  
**Medium:** Graphite drawing with wash shading on cream colored paper with ink inscriptions



**Title:** Monmouth Court-House in 1778  
**Primary Maker:** Carrie A. Bowne Swift  
**Medium:** Oil on artist's board



**Title:** Monmouth Court House in 1778  
**Primary Maker:** Carrie A. Bowne Swift  
**Medium:** Oil on artist board



**Title:** Monmouth Flag  
**Medium:** Silk, and silk brocade



**Title:** Monmouth House  
**Primary Maker:** Pierre Sanford Ross III  
**Medium:** Black ink on paper





**Title: Moonlit Woods**  
**Primary Maker:** William Savery Bucklin  
**Medium:** Graphite on paper



**Title: Morford and Spinning Store**  
**Primary Maker:** Sarah Hendrickson Van Schoick Reid  
**Medium:** Pastel and charcoal on prepared board coated with marble dust



**Title: Morning Frost**  
**Primary Maker:** William Savery Bucklin  
**Medium:** Graphite on paper glued to card board



**Title: Mossy Tree and Palmettos (Florida Landscape)**  
**Primary Maker:** William Savery Bucklin  
**Medium:** Graphite on paper



**Title: Mourning Brooch**  
**Medium:** Gold, enamel, human hair



**Title: Mrs. Daniel Conover**  
**Medium:** Pencil on paper



**Title: Mrs. Young**  
**Primary Maker:** Abraham Parsell  
**Medium:** Oil on ivory, colorless glass, wood frame



**Title: Mr. Young**  
**Primary Maker:** Abraham Parsell  
**Medium:** Oil on ivory, colorless glass, wood frame



**Title: Musket**  
**Medium:** Walnut, steel, brass, iron



**Title: Musket**  
**Medium:** Walnut, iron, steel, brass



**Title: Nathaniel Scudder Wikoff**  
**Primary Maker:** Unknown Artist  
**Medium:** Oil on ivory, colorless glass, gilt metal, wood, cardboard



**Title: National Guard Whistle**  
**Primary Maker:** B & R Manufacturing Co.  
**Medium:** Copper, brass



**Title: Navy Colt Pistol**  
**Primary Maker:** Colt's Manufacturing Company  
**Medium:** Walnut, steel, brass



**Title: Navy Uniform Jacket**  
**Medium:** Wool, cotton, brass, steel



**Title: Necklace**  
**Medium:** Pink paste stones, silver, seed pearls



**Title: Necklace and Earrings**  
**Medium:** Gold, marble, glass, silk



**Title: Neptune Club Badge**  
**Medium:** Brass, enamel



**Title: New Jersey Civil War Veteran Medal**  
**Medium:** Bronze



**Title:** New Jersey Whig Delegation Badge  
**Medium:** Ribbed silk, silk ribbon.



**Title:** The New Premium Game Logomachy, or War of Words  
**Medium:** Cardboard, chromolithographed paper, pasteboard



**Title:** Night Landscape at North American Phalanx  
**Primary Maker:** William Savery Bucklin  
**Medium:** Graphite on paper glued to cardboard



**Title:** Night Scene of the Phalanstery Building  
**Primary Maker:** William Savery Bucklin  
**Medium:** Graphite on paper, mounted on cardboard



**Title:** Nine Patch Quilt Block  
**Medium:** Cotton



**Title:** Nine Patch Quilt Block  
**Medium:** Cotton



**Title:** The North American Phalanx  
**Primary Maker:** Unknown Artist  
**Medium:** Oil on canvas



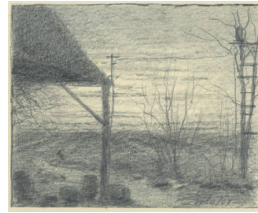
**Title:** Ocean Grove, New Jersey  
**Primary Maker:** Augustus Kollner  
**Medium:** Watercolor on paper



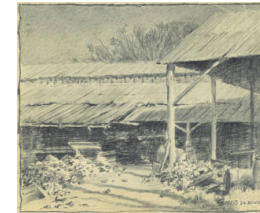
**Title:** The Olde Academy, Middletown Point  
**Primary Maker:** Unknown Artist  
**Medium:** Graphite on paper



**Title:** Oldest House in Manasquan  
**Primary Maker:** Josephine Des Anges  
**Medium:** Oil on academy board



**Title:** Old Outbuildings and Barrels at the Phalanx  
**Primary Maker:** William Savery Bucklin  
**Medium:** Graphite and charcoal on paper mounted to cardboard



**Title:** Old Phalanx Lunber Yard and Workshops  
**Primary Maker:** William Savery Bucklin  
**Medium:** Graphite on paper



**Title:** Old Tennent Church  
**Primary Maker:** Alessandro E. Mario  
**Medium:** Oil on canvas



**Title:** The Old Tennent Church  
**Primary Maker:** Carrie A. Bowne Swift  
**Medium:** Oil on art board



**Title:** Old Tennent Church  
**Primary Maker:** Frank Ochs  
**Medium:** Ink on heavy paper





**Title:** Old Tennent Church  
**Primary Maker:** H. Catkins  
**Medium:** Charcoal with traces of graphite on heavy paper



**Title:** Old Tennent Church  
**Primary Maker:** Unknown Artist  
**Medium:** Graphite on paper



**Title:** Old Tennent Church  
**Primary Maker:** Will Hammell  
**Medium:** Graphite and ink on artist's board



**Title:** Old Tennent Church and Graveyard  
**Primary Maker:** Miss Harriet E. Applegate  
**Medium:** Graphite and pastel on sandpaper board



**Title:** Old Tennent Church Lectern Fringe  
**Primary Maker:** Old Tennent Church  
**Medium:** Silk



**Title:** The Old Tennent Church on the Monmouth Battle Ground  
**Primary Maker:** Carrie A. Bowne Swift  
**Medium:** Oil on clam shell



**Title:** Old Tennent Parsonage  
**Primary Maker:** Carrie A. Bowne Swift  
**Medium:** Graphite on paper



**Title:** The Old Tennent Parsonage on Monmouth Battlefield  
**Primary Maker:** Charles Currier  
**Medium:** Lithograph on paper



**Title:** The Old Washington House on Claypit Creek  
**Primary Maker:** Unknown Artist  
**Medium:** Oil on wood panel



**Title: Old Willow Tree  
Tavern at Clarksburg**  
**Primary Maker:** Hendrickson  
**Medium:** Pastel on thin  
board



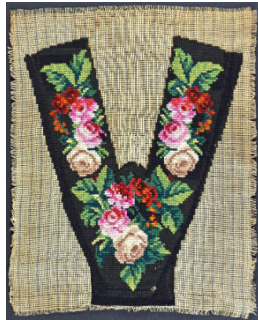
**Title: Orphelinat des  
Armees Medal**  
**Primary Maker:** Rene  
Lalique  
**Medium:** Stamped brass



**Title: Pair of Boots**  
**Medium:** Leather, cotton,  
steel



**Title: Pair of Bracelets**  
**Medium:** Jet, gold, steel  
wire



**Title: Pair of  
Embroidered Slippers**  
**Medium:** Plied wool thread  
on waste canvas



**Title: Pair of Gloves**  
**Medium:** Leather



**Title: Pair of Pockets**  
**Medium:** Dimity cotton,  
linen, cotton twill tape



**Title: Pair of Shoes**  
**Medium:** Leather, steel,  
cotton



**Title: Pair of Shoes**  
**Medium:** Silk satin, leather,  
brass, linen, cotton



**Title:** Pair of Show Globes  
**Primary Maker:** Whitall, Tatum & Co.  
**Medium:** Cast metal, colorless glass, and colored water



**Title:** Pair of Stockings  
**Medium:** Cotton



**Title:** Pair of Women's Shoes  
**Medium:** Silk, linen, leather, wood, metallic thread



**Title:** Parlor Croquet  
**Medium:** Wood, steel



**Title:** Parlor Table Mat  
**Medium:** Wool, silk cording



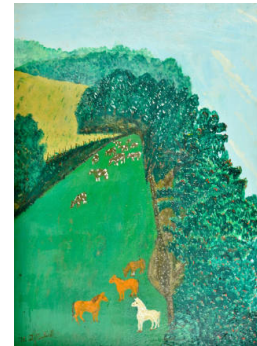
**Title:** The Parsonage in 1850  
**Primary Maker:** Unknown Artist  
**Medium:** Graphite with wash shading on cream colored paper with ink inscriptions



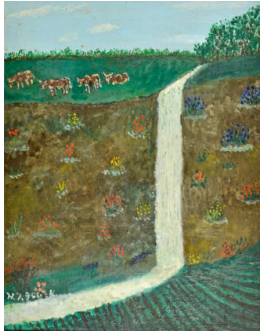
**Title:** Parure Set of Brooch and Earrings  
**Medium:** White and brown lava, gold



**Title:** Passenger Sailing Packet  
**Primary Maker:** Carrie A. Bowne Swift  
**Medium:** Oil on academy board



**Title:** Pasture  
**Primary Maker:** Henry Thomas Gulick  
**Medium:** Oil on masonite



**Title:** Pasture with Cows, Stream and Flowers  
**Primary Maker:** Henry Thomas Gulick  
**Medium:** Oil on masonite



**Title:** Peace of Versailles 1919 Medal  
**Primary Maker:** Chester Beach  
**Medium:** Silver



**Title:** Pembroke Table  
**Medium:** Walnut and poplar



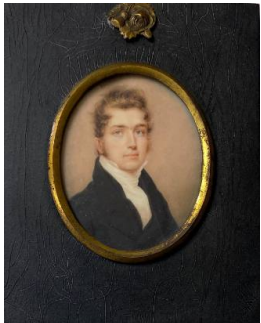
**Title:** Pendant  
**Medium:** Gold, ivory, glass



**Title:** Penelope Minturn  
**Medium:** Watercolor on paper, glass, velvet and silk case frame



**Title:** Pen Knife  
**Primary Maker:** Asher Holmes  
**Medium:** Bone, steel blade



**Title:** Peter Dubois  
**Primary Maker:** Unknown Artist  
**Medium:** Oil on ivory, colorless glass, gilt metal, wood, cardboard



**Title:** Peter Luyster  
**Primary Maker:** Daniel Hendrickson  
**Medium:** Oil on canvas backed with a wood panel



**Title:** Peter Scoyen  
**Primary Maker:** John Wesley Jarvis  
**Medium:** Oil on ivory





**Title: Petticoat**  
**Medium:** Nylon silk, cotton



**Title: Petticoat**  
**Medium:** Nylon netting, nylon stretch fabric, nylon lace, elastic



**Title: The Phalanstery Building in Winter**  
**Primary Maker:** William Savery Bucklin  
**Medium:** Graphite on paper mounted on cardboard, with varnished surface



**Title: The Phalanstery Building in Winter**  
**Primary Maker:** William Savery Bucklin  
**Medium:** Graphite on paper glued to cardboard



**Title: Phalanx Landscape**  
**Primary Maker:** William Savery Bucklin  
**Medium:** Graphite on paper glued to cardboard



**Title: Phalanx Ruinon**  
**Primary Maker:** William Savery Bucklin  
**Medium:** Graphite on paper



**Title: Pharmacy Jar**  
**Medium:** Buff earthenware with tin glaze



**Title: Phoebe Hunn Vanderhoef**  
**Primary Maker:** Perry Hunn  
**Medium:** Oil on wood panel



**Title: Pill Mold**  
**Medium:** Hardened rubber



**Title: Pilot House Eagle**  
**Primary Maker:** Unknown  
**Maker**  
**Medium:** Carved, gessoed, gilded and painted pine, reinforced with iron straps



**Title: Pin Ball**  
**Medium:** Plied silk thread, linen, wool, and silk ribbon



**Title: Pin Cushion**  
**Medium:** Linen, plied silk thread, printed cotton, wool, and steel pins



**Title: Pin Top Table**  
**Medium:** Walnut, chestnut, and hard pine



**Title: Pin Top Table**  
**Medium:** Tulip poplar and hard pine



**Title: Pitcher**  
**Medium:** Creamware



**Title: Plan of the Centre Square of the Polytechnic Institute of Shrewsbury New Jersey**  
**Primary Maker:** A. Martino  
**Medium:** Lithograph on paper, with coloring added



**Title: Plate**  
**Medium:** Buff earthenware, tin glaze



**Title: Plate**  
**Medium:** Buff earthenware, tin glaze



**Title: Plate**  
**Medium:** Buff earthenware, tin glaze



**Title: Plate**  
**Medium:** Buff earthenware, tin glaze



**Title: Plate**  
**Medium:** Earthenware, lead glaze



**Title: Plate**  
**Medium:** Buff earthenware, tin glaze



**Title: Plate**  
**Medium:** Buff earthenware, tin glaze



**Title: Plate**  
**Medium:** Buff earthenware, tin glaze



**Title: Plate**  
**Medium:** Tin-glazed earthenware



**Title: Plate**  
**Medium:** Tin-glazed earthenware



**Title: Plate**  
**Medium:** Earthenware, tin glaze



**Title: Plate**  
**Medium: Tin glazed earthenware**



**Title: Plate**  
**Medium: Buff earthenware**



**Title: Plate**  
**Medium: White earthenware with blue-tinted lead glaze**



**Title: Plate**  
**Medium: Earthenware**



**Title: Plate**  
**Medium: White earthenware**



**Title: Plate**  
**Medium: Buff earthenware with a tin glaze**



**Title: Plate**  
**Medium: Earthenware**



**Title: Plate**



**Title: Plates**  
**Medium: Buff earthenware, tin glaze**





**Title: Plates**  
**Medium:** Buff earthenware,  
tinted glaze



**Title: Plates**  
**Medium:** Buff earthenware,  
tin glaze



**Title: Plates**  
**Medium:** Buff earthenware,  
tin glaze



**Title: Platter**  
**Primary Maker:** Spode  
**Medium:** Stone China



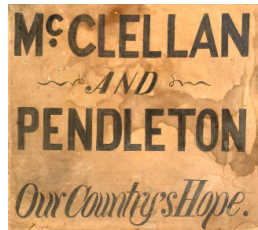
**Title: Platter**  
**Medium:** Stoneware, salt  
glaze



**Title: Pocket**  
**Medium:** Printed cottons,  
linen, cotton tape



**Title: Pocketbook**  
**Medium:** Silk and cardboard



**Title: Political Banner**  
**Medium:** Black ink over  
graphite on woven cotton



**Title: A Pond in  
Moonlight**  
**Primary Maker:** William  
Savery Bucklin  
**Medium:** Graphite on paper



**Title:** Portrait Bust of the Marquis de Lafayette  
**Primary Maker:** Probably Dover Furnace  
**Medium:** Cast iron



**Title:** Powder Horn  
**Medium:** Cow horn



**Title:** Printing Plate  
**Primary Maker:** A. and M. Karagheusian  
**Medium:** Steel



**Title:** Prize Oxen of James Anderson Perrine  
**Primary Maker:** Alessandro E. Mario  
**Medium:** Oil on canvas



**Title:** Prohibition Badge  
**Medium:** Silk



**Title:** Punch Bowl  
**Medium:** White earthenware with blue-tinted lead glaze



**Title:** Purse  
**Medium:** Glass and metallic beads, corded satin, mother of pearl



**Title:** Purse  
**Medium:** Leather, tortoiseshell, paper, silver, German steel



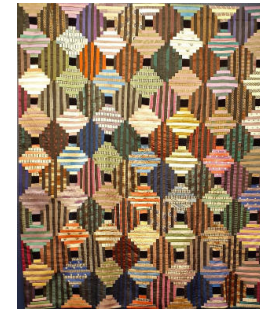
**Title:** Purse  
**Medium:** Cotton, glass beads, brass, silk



**Title:** Quilt  
**Primary Maker:** Hannah Elizabeth Huyler  
**Medium:** Silk, silk embroidery floss, cotton backing, cotton batting



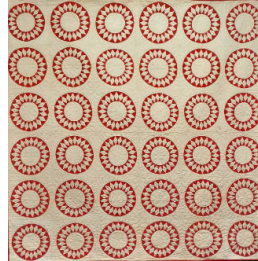
**Title:** Quilt  
**Medium:** Printed and solid woven cotton, cotton batting



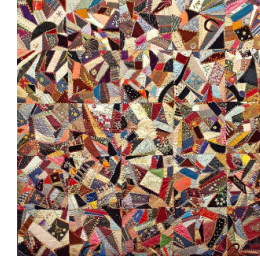
**Title:** Quilt  
**Medium:** Silk, velvet



**Title:** Quilt  
**Medium:** Printed and sold cottons



**Title:** Quilt  
**Medium:** Cotton, cotton batting



**Title:** Quilt  
**Medium:** Silk, cotton and silk velvet, silk embroidery thread, silk satin



**Title:** Quilt Blocks  
**Medium:** Cotton



**Title:** Quilt Blocks  
**Medium:** Cotton



**Title:** Quilted Bonnet  
**Medium:** Silk, buckram, wool, silk ribbon





**Title: Quilted Hood**  
**Medium:** Silk, silk ribbon,  
wool batting



**Title: Quilted Petticoat**  
**Medium:** Silk, glazed linen,  
glazed cotton, wool, wool  
batting



**Title: The Racehorse**  
**George M. Patchen**  
**Primary Maker:** Charles  
Spencer Humphreys  
**Medium:** Oil on canvas



**Title: Rattle**  
**Medium:** Wood



**Title: Rebecca**  
**Crawford Conover**  
**Date:** 1850-1860  
**Primary Maker:** Harvey  
Jenkins  
**Medium:** Oil on canvas



**Title: Rebecca**  
**Crawford Conover**  
**Primary Maker:** George  
Henry Durrie  
**Medium:** Oil on canvas



**Title: Rebecca Hubbard**  
**Primary Maker:** Micah  
Williams  
**Medium:** Pastel on paper



**Title: Reception Dress**  
**Primary Maker:** O'Hara  
Dressmakers  
**Medium:** Cotton lace, silk,  
steel boning



**Title: Reception Dress**  
**Date:** 1845-1850  
**Medium:** Heavy woven silk  
brocade, corded silk,  
glazed cotton, whalebone  
(baleen), silk gauze.





**Title:** The Recruit with a View of the Encampment at Monmouth, N. J. 1777  
**Primary Maker:** William H. Ellis  
**Medium:** Engraving on paper enhanced with watercolor



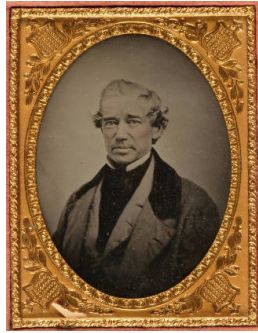
**Title:** Reticule or Drawstring Purse  
**Medium:** Cotton, linen



**Title:** Revolutionary Times in New Jersey  
**Primary Maker:** Howard N. Cook  
**Medium:** Woodcut on paper with black ink



**Title:** Richard Hartshorne  
**Primary Maker:** Alexander Anderson  
**Medium:** Gouache on ivory in gold, colorless glass, lacquered wood frame



**Title:** Richard Hartshorne  
**Medium:** Ambrotype, thermoplastic union case



**Title:** Richard Hartshorne  
**Medium:** Daguerreotype



**Title:** Riding Crop  
**Medium:** Leather, wood, waxed cording



**Title:** Ring  
**Medium:** Gold, human hair



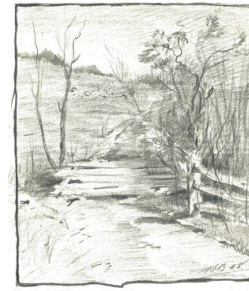
**Title:** Ring  
**Medium:** Gold, human hair



**Title:** Ring  
**Medium:** Gold, human hair, horsehair



**Title:** Road and Barn  
**Primary Maker:** William Savery Bucklin  
**Medium:** Graphite on paper



**Title:** Road, Fence, Trees and Hill  
**Primary Maker:** William Savery Bucklin  
**Medium:** Graphite on paper glued to cardboard



**Title:** Road To Laws Farm in the Moonlight  
**Primary Maker:** William Savery Bucklin  
**Medium:** Graphite on paper



**Title:** The Road to the Bowne House  
**Primary Maker:** James Crawford Thom  
**Medium:** Oil on wood panel



**Title:** Robert Hartshorne  
**Primary Maker:** Laura Hills  
**Medium:** Watercolor on ivory, gold, glass, lacquered wood frame



**Title:** Rocking Settee  
**Medium:** White pine, hickory, and ash



**Title:** A Rocky Shore with Mossy Trees and Lake  
**Primary Maker:** William Savery Bucklin  
**Medium:** Graphite on paper



**Title:** Round Gown  
**Medium:** Silk, linen, cotton



**Title:** Ruins of an Old Building in the Woods  
**Primary Maker:** William Savery Bucklin  
**Medium:** Graphite on paper glued to cardboard



**Title:** Runaway Slave Ad  
**Medium:** Ink on paper



**Title:** Rushlight  
**Medium:** Wrought iron, wood



**Title:** Russian Bazaar Souvenir  
**Primary Maker:** Whitehead and Hoag Company  
**Medium:** Bronze, silk



**Title:** Rutgers College  
**Primary Maker:** Mary Ann Van Schoick  
**Medium:** Black and white pastel on thin cardboard prepared with marble dust



**Title:** Sack Back Windsor Arm Chair  
**Medium:** Maple and ash



**Title:** Sack Back Windsor Arm Chair  
**Medium:** Maple and ash



**Title:** Sack Back Windsor Arm Chair  
**Medium:** Maple and ash



**Title:** Sacred Soil of Virginia  
**Medium:** Glass, soil





**Title:** Salvator at Monmouth Park  
**Primary Maker:** George S. Richardson  
**Medium:** Oil on canvas



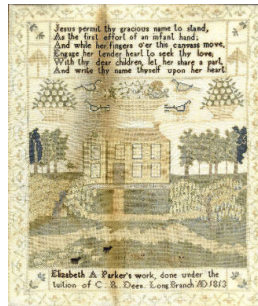
**Title:** Salz's Christmas Button (Keyport)  
**Primary Maker:** Ehrman Manufacturing Co.  
**Medium:** Celluloid, metal alloy



**Title:** Sampler  
**Primary Maker:** Isabel Irving  
**Medium:** Plied silk thread on linen



**Title:** Sampler  
**Primary Maker:** Eliza Ann Van Mater  
**Medium:** Silk plied embroidery thread on plain linen ground



**Title:** Sampler  
**Primary Maker:** Elizabeth A. Parker  
**Medium:** Plied silk thread on linen

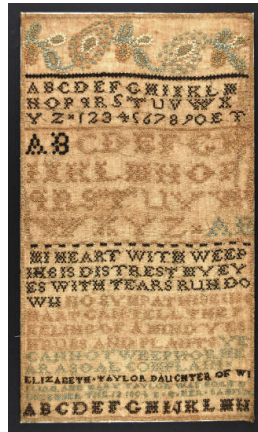


**Title:** Sampler  
**Primary Maker:** Hannah Vanderveer  
**Medium:** Plied wool and plied silk threads on linen





**Title:** Sampler  
**Primary Maker:** Lydia Ann Durell  
**Medium:** Plied silk thread on linen



**Title:** Sampler  
**Primary Maker:** Elizabeth Taylor  
**Medium:** Fine plied silk thread on linen



**Title:** Sampler  
**Primary Maker:** Caroline Tiel Durell  
**Medium:** Plied wool thread on cotton canvas



**Title:** Sampler  
**Primary Maker:** Mary H. Applegate  
**Medium:** Plied silk thread on linen



**Title:** Sampler  
**Primary Maker:** Elizabeth VanDerveer  
**Medium:** Plied wool thread on linen



**Title:** Sampler  
**Primary Maker:** Eleanor J. Taylor  
**Medium:** Plied silk thread on linen



**Title:** Sampler  
**Primary Maker:** Emeline Conover  
**Medium:** Silk thread on linen ground



**Title:** Sampler  
**Primary Maker:** Hannah Dorset Taylor  
**Medium:** Embroidered silk on linen



**Title:** Sampler  
**Primary Maker:** Jane Ann VanDerveer  
**Medium:** Plied wool thread on linen



**Title:** Sampler  
**Primary Maker:** Sarah Throckmorton  
**Medium:** Silk plied thread on linen with muslin support



**Title:** Sampler  
**Primary Maker:** Annie J. Hendrickson  
**Medium:** Plied wool thread on waste canvas



**Title:** Sampler  
**Primary Maker:** Sophia W. Brognard  
**Medium:** Silk and linen



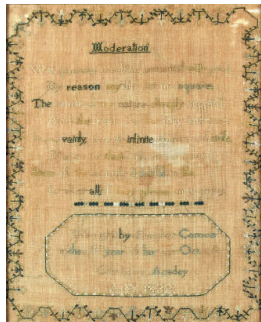
**Title:** Sampler  
**Primary Maker:** Emma Louisa Castner  
**Medium:** Plied silk thread on natural linen



**Title:** Sampler  
**Primary Maker:** Jane Smock  
**Medium:** Plied silk thread on linen



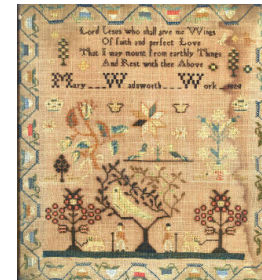
**Title:** Sampler  
**Primary Maker:** Sarah A. Vanderveer  
**Medium:** Plied silk thread on linen



**Title:** Sampler  
**Primary Maker:** Emeline Conover  
**Medium:** Silk on linen

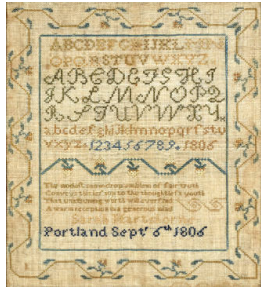


**Title:** Sampler  
**Primary Maker:** Mary Collier  
**Medium:** Plied wool and plied silk thread on linen



**Title:** Sampler  
**Primary Maker:** Mary Wadsworth  
**Medium:** Plied silk thread on linen





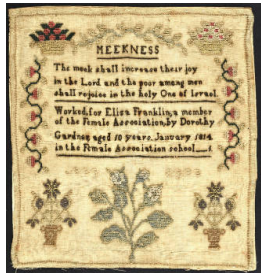
**Title:** Sampler  
**Primary Maker:** Sarah Hartshorne  
**Medium:** Plied silk thread on natural linen



**Title:** Sampler  
**Primary Maker:** Sophia J. Hamilton  
**Medium:** Plied silk thread on linen



**Title:** Sampler  
**Primary Maker:** Harriet R. Harrington  
**Medium:** Plied and flat silk thread on natural linen



**Title:** Sampler  
**Primary Maker:** Dorothy Gardner  
**Medium:** Silk plied thread on fine linen



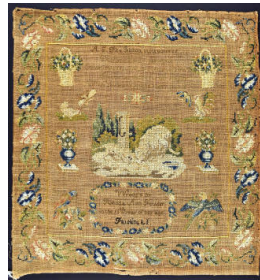
**Title:** Sampler  
**Primary Maker:** Elenor M. Page  
**Medium:** Plied silk thread on linen



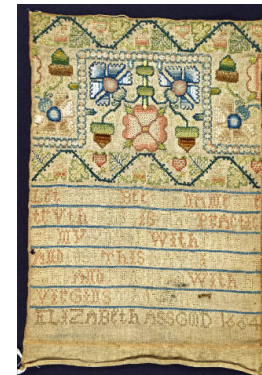
**Title:** Sampler  
**Primary Maker:** Mary D. Anderson  
**Medium:** Plied silk thread and flat silk thread on linen



**Title:** Sampler  
**Primary Maker:** Margaret Paschall  
**Medium:** Plied silk thread, natural linen ground



**Title:** Sampler  
**Primary Maker:** Rhoda Ann Fowler  
**Medium:** Plied silk thread on linen



**Title:** Sampler  
**Primary Maker:** Elizabeth Assgood  
**Medium:** Plied silk thread on linen



**Title:** Sampler  
**Primary Maker:** Hannah E. Dutton  
**Medium:** Plied wool thread on lightweight linen



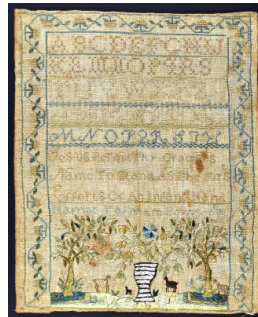
**Title:** Sampler  
**Primary Maker:** Sarah Smedley  
**Medium:** Plied wool thread and plied silk thread on open weave linen



**Title:** Sampler  
**Primary Maker:** Catherine Knott Hall  
**Medium:** Plied silk thread on brown linen ground



**Title:** Sampler  
**Primary Maker:** Elizabeth S. Antrim  
**Medium:** Plied silk and plied cotton threads on linen



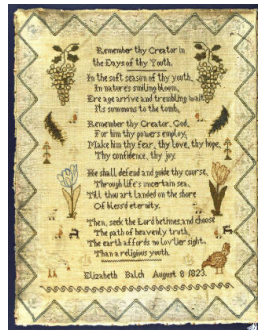
**Title:** Sampler  
**Primary Maker:** Harriet Farnham  
**Medium:** Plied and flat silk thread on linen with diaper weave cotton backing



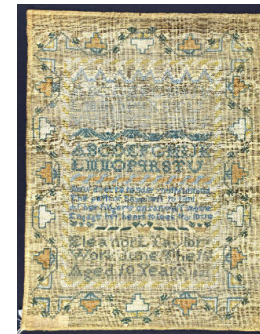
**Title:** Sampler  
**Primary Maker:** Deborah Oldham  
**Medium:** Plied wool yarn on rough natural linen



**Title:** Sampler  
**Primary Maker:** Sarah Purslow  
**Medium:** Plied silk thread on wool



**Title:** Sampler  
**Primary Maker:** Elizabeth Balch  
**Medium:** Plied silk thread on linen



**Title:** Sampler  
**Primary Maker:** Eleanor Lyell Taylor  
**Medium:** Cotton and silk thread on linen ground





**Title:** Sampler  
**Primary Maker:** Caroline A. Heywood  
**Medium:** Plied and flat silk threads on natural linen



**Title:** Sampler  
**Primary Maker:** Fanny Osborn  
**Medium:** Plied silk thread on linen



**Title:** Sampler  
**Primary Maker:** Anna Hartshorn  
**Medium:** Plied and unplied silk thread on linen



**Title:** Sampler  
**Primary Maker:** Abigail Lippincott  
**Medium:** Plied silk thread on rough brown linen



**Title:** Sampler  
**Primary Maker:** Mary Jane Story  
**Medium:** Plied silk thread on coarse linen canvas



**Title:** Sampler  
**Primary Maker:** Deborah Craft  
**Medium:** Plied silk thread on rough linen



**Title:** Sampler  
**Primary Maker:** Mary Martin  
**Medium:** Plied silk thread on wool



**Title:** Sampler  
**Primary Maker:** Harriet Bayles  
**Medium:** Plied and flat silk thread on linen



**Title:** Sampler  
**Primary Maker:** Elizabeth Cooper  
**Medium:** Plied silk thread on linen



**Title:** Sampler  
**Primary Maker:** Catherine Gracey  
**Medium:** Plied silk thread on brown linen



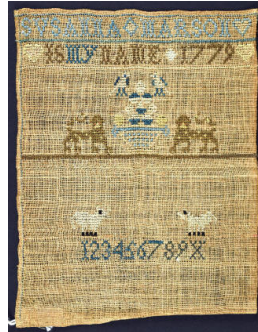
**Title:** Sampler  
**Primary Maker:** Mary Clayton  
**Medium:** Plied cotton thread and plied silk thread on coarse natural linen



**Title:** Sampler  
**Primary Maker:** Anne Longstreet  
**Medium:** Plied silk thread on coarse linen ground



**Title:** Sampler  
**Primary Maker:** Lydia Jane Blauvelt  
**Medium:** Plied cotton thread and plied wool thread on natural linen



**Title:** Sampler  
**Primary Maker:** Susanna Marson  
**Medium:** Plied silk thread on linen



**Title:** Sampler  
**Primary Maker:** Emma Bennet  
**Medium:** Plied silk thread on linen



**Title:** Sampler  
**Primary Maker:** Gordelia Emirette Wheeler  
**Medium:** Plied cotton thread on linen



**Title:** Sampler  
**Primary Maker:** Deborah Deacon  
**Medium:** Plied silk thread on linen



**Title:** Sampler  
**Primary Maker:** Elizabeth A. Leonard  
**Medium:** Plied silk thread on linen





**Title:** Sampler  
**Primary Maker:** Elizabeth Sturges  
**Medium:** Plied and flat silk threads on natural linen



**Title:** Sampler  
**Primary Maker:** Ann Hornby  
**Medium:** Plied and flat silk thread on linen



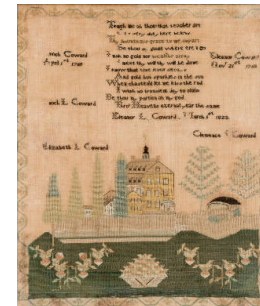
**Title:** Sampler  
**Primary Maker:** Harriet Clark  
**Medium:** Plied silk thread on linen



**Title:** Sampler  
**Primary Maker:** Mary Ann Disbrow  
**Medium:** Plied silk thread on linen



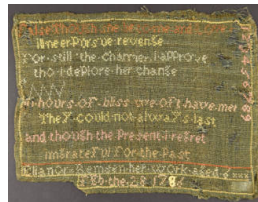
**Title:** Sampler  
**Primary Maker:** Hannah Matthews  
**Medium:** Plied, flat, and unraveled silk thread on linen



**Title:** Sampler  
**Primary Maker:** Eleanor L. Coward  
**Medium:** Silk on linen



**Title:** Sampler  
**Primary Maker:** Leah Conover  
**Medium:** Silk thread on linen



**Title:** Sampler  
**Primary Maker:** Eleanor Remsen  
**Medium:** Plied silk thread on linsey woolsey



**Title:** Sampler  
**Primary Maker:** Lucy Burtis  
**Medium:** Silk and linen



**Title: Sampler**  
**Primary Maker:** Eleanora Morgan  
**Medium:** Plied silk thread on tan linen



**Title: Sampler**  
**Primary Maker:** Almira Morgan  
**Medium:** Linen, plied silk thread



**Title: Sampler**  
**Medium:** Plied cotton thread on linen



**Title: Sampler**  
**Medium:** Plied silk thread on linen



**Title: Sampler**  
**Medium:** Plied, flat, and unraveled silk thread on linen



**Title: Sampler**  
**Medium:** Linen, silk thread



**Title: Sampler**  
**Medium:** Silk on linen



**Title: Sampler**  
**Medium:** Silk on linen



**Title: Sampler Practice Piece**  
**Medium:** Plied silk thread on linen





**Title: Sampler Practice Piece**

**Medium:** Plied silk thread on linen



**Title: Sampler Practice Piece**

**Medium:** Plied silk thread on linen



**Title: Sampler Practice Piece**

**Medium:** Plied silk thread on coarse brown linen



**Title: Sampler Practice Piece**

**Medium:** Plied silk thread on linen



**Title: Sampler Practice Piece**

**Medium:** Plied silk thread on linen



**Title: Sampler Practice Piece**

**Medium:** Plied silk thread on linen



**Title: Sampler Practice Piece**

**Medium:** Plied silk thread on linen



**Title: Sampler Practice Piece**

**Medium:** Plied silk and cotton threads on linen



**Title: Sampler Practice Piece**

**Medium:** Plied silk thread on linen



**Title:** Sampler Practice Piece

**Medium:** Plied silk thread on linen



**Title:** Sampler Practice Piece

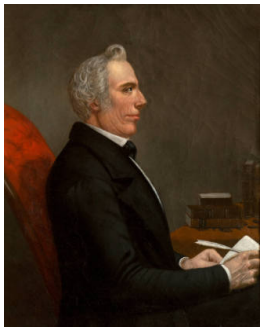
**Medium:** Plied wool thread on linen



**Title:** Samuel Gardiner Wright

**Primary Maker:** James Martin

**Medium:** Pastel on paper



**Title:** Samuel Hubbard

**Primary Maker:** Harvey Jenkins

**Medium:** Oil on canvas



**Title:** Samuel L. Southard

**Primary Maker:** Unknown Artist

**Medium:** Oil on canvas



**Title:** The Sandy Hook Lightship

**Primary Maker:** Milton James Burns

**Medium:** Oil on canvas



**Title:** Sap

**Medium:** Leather, steel spring, lead



**Title:** Sarah Conover Schanck Smock and Baby Elenor

**Primary Maker:** Micah Williams

**Medium:** Pastel on paper



**Title:** Sarah Lloyd Taylor

**Primary Maker:** Abraham P. Demarest

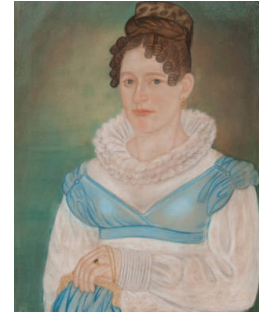
**Medium:** Pencil on paper



**Title:** Sarah Peacock Schenck  
**Primary Maker:** Micah Williams  
**Medium:** Pastel on paper



**Title:** Sarah (Sally) Hendrickson Holmes  
**Primary Maker:** Micah Williams  
**Medium:** Pastel on paper



**Title:** Sarah Van Mater Disbrow  
**Primary Maker:** Micah Williams  
**Medium:** Pastel on paper



**Title:** Sarah Van Mater Van Mater  
**Primary Maker:** Micah Williams  
**Medium:** Pastel on paper



**Title:** Saucer  
**Primary Maker:** Lowestoft Porcelain Factory  
**Medium:** Soft-paste porcelain



**Title:** The Schooner  
**Samuel S. Thorp**  
**Primary Maker:** William G. Yorke  
**Medium:** Oil on canvas



**Title:** Schroeder's Pharmacy Tin  
**Date:** ca. 1920  
**Primary Maker:** Schroeder's Pharmacy  
**Medium:** Tin, paper label.



**Title:** Scissor Bullet Mold  
**Medium:** Iron



**Title:** Sea Bright Beach  
**Primary Maker:** Michel Jacobs  
**Medium:** Oil on canvas





**Title: Seated Cat**  
**Medium:** Off-white earthenware, with mottled green, yellow and brown glazes



**Title: Seidlitz Powder Box**  
**Medium:** Cardboard



**Title: Seidlitz Powder Box**  
**Medium:** Cardboard



**Title: Senator Hendrickson's Farm**  
**Primary Maker:** Henry Thomas Gulick  
**Medium:** Oil on masonite



**Title: Service Bar Patch**  
**Primary Maker:** George D. Fleming  
**Medium:** Wool, cotton, buckram



**Title: Shawl**  
**Medium:** Cotton, silk



**Title: Shawl Fragment**  
**Medium:** wool



**Title: Shell**  
**Medium:** Calcium carbonate



**Title: Shellwork Bouquet**  
**Medium:** Sea shells, wire, plaster, wood, glass, paper





**Title:** The Shirt -  
Portrait of Henry  
**Primary Maker:** Henry  
Thomas Gulick  
**Medium:** Oil on masonite



**Title:** Shoe  
**Medium:** Silk, linen,  
leather, wood, metal



**Title:** Shoe Buckles  
**Medium:** Silver, steel



**Title:** Shoes  
**Medium:** Silk, leather,  
linen, silk ribbon



**Title:** Shoes  
**Medium:** Cotton sateen,  
leather, linen, woven  
cotton tape



**Title:** Short Gown  
**Primary Maker:** Elizabeth  
"Betty" Dorn  
**Medium:** Printed cotton  
calico



**Title:** Shrewsbury  
Bridge Sign  
**Medium:** Iron, enamel



**Title:** Sideboard  
**Primary Maker:** Alexander  
Low  
**Medium:** Cherry, tulip  
poplar and white pine, with  
mahogany cockbeading



**Title:** Side Chair  
**Medium:** Walnut, with hard  
pine seat frame and corner  
blocks



**Title: Side Chair**  
**Medium:** Walnut and pine



**Title: Side Chair**  
**Medium:** Walnut, with hard pine slip seat frame



**Title: Side Chair**  
**Medium:** Walnut, with hard pine corner blocks and slip seat frame



**Title: Side Chair**  
**Medium:** Mahogany, white oak, and Atlantic white cedar, the last two determined by microanalysis



**Title: Side Chair**  
**Medium:** Mahogany, ash, and apparently tulip poplar



**Title: Side Chair**  
**Medium:** Mahogany, mahogany veneer, and ash



**Title: Side Chair**  
**Medium:** Walnut and hard pine, as determined by microanalysis



**Title: Side Chair**  
**Medium:** Cherry, and sweet gum (determined by microanalysis)



**Title: Side Chair**  
**Medium:** Probably walnut, and oak



**Title: Side Chair**  
**Medium:** Mahogany, and  
hard pine



**Title: Side Chair**  
**Medium:** Mahogany, and  
unidentified softwood  
blocks



**Title: Side Chair**  
**Medium:** Maple, and birch



**Title: Side Chair**  
**Medium:** Maple, and oak



**Title: Side Chair**  
**Medium:** Maple



**Title: Side Chair**  
**Medium:** Mahogany



**Title: Side Chair**  
**Medium:** Maple and ash



**Title: Side Chair**  
**Medium:** Walnut, and pine



**Title: Side Chair**  
**Medium:** Mahogany



**Title:** Side Chair  
**Medium:** Mahogany, and hard pine



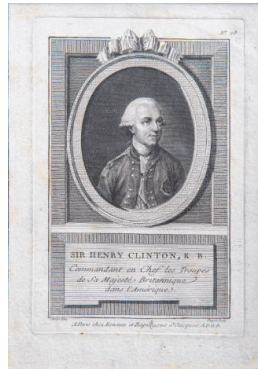
**Title:** Sign - Freehold Migrant Family Center  
**Medium:** Wood



**Title:** Silhouette of Bodine Girl  
**Medium:** Cut paper on silk



**Title:** Silhouette of Grandmother Clark  
**Medium:** Cut paper



**Title:** Sir Henry Clinton, K.B., Commandant en Chef les Troupes de la Majeste Britannique dans l'Amerique  
**Date:** ca. 1775  
**Primary Maker:** Dupin  
**Medium:** Engraving on paper



**Title:** Slab Table  
**Medium:** Cherry and white pine, identified by microanalysis performed at the Center for Wood Anatomy Research, Madison, Wisconsin, and at Winterthur, both in 1977. Limestone identified by Margaret Carruthers, Museum of Natural History, New York.



**Title:** Slant Front Desk  
**Primary Maker:** Samuel Vaughn  
**Medium:** Maple, white pine, and tulip poplar



**Title:** Slant Front Desk  
**Medium:** Mahogany, mahogany veneer, tulip poplar, and pine



**Title:** Slant Front Desk  
**Medium:** Walnut, tulip poplar, and white pine





**Title: Slant Front Desk on Frame**

**Medium:** American birch (determined by microanalysis), white pine (determined by microanalysis), chestnut, and tulip poplar



**Title: Slat Back Arm Chair**

**Primary Maker:** Michael Maps  
**Medium:** Maple and ash



**Title: Slat Back Arm Chair**

**Primary Maker:** Elizabeth "Betty" Dorn  
**Medium:** Maple, ash or oak, with rush seat



**Title: Slat Back Arm Chair**

**Primary Maker:** Michael Maps  
**Medium:** Maple, ash



**Title: Slat Back Arm Chair**

**Medium:** Probably maple and ash



**Title: Slat Back Arm chair**

**Medium:** Maple, and ash



**Title: Slat Back Arm Chair**

**Medium:** Maple, and ash



**Title: Slat Back Arm Chair**

**Medium:** Maple and ash



**Title: Slat Back Arm Chair**

**Medium:** Maple, and ash



**Title: Slat Back Rocking Corner Chair**  
**Primary Maker:** Michael Maps  
**Medium:** Maple, and ash



**Title: Slat Back Side Chair**  
**Primary Maker:** Michael Maps  
**Medium:** Maple and ash



**Title: Slat Back Side Chair**  
**Primary Maker:** Cornelius A. Demarest  
**Medium:** Maple, and ash



**Title: Slat Back Side Chair**  
**Primary Maker:** William Hann  
**Medium:** Maple, and ash



**Title: Slat Back Side Chair**  
**Medium:** Maple, and ash



**Title: Slat Back Side Chair**  
**Medium:** Maple



**Title: Slip**  
**Medium:** Tricot nylon, acetate satin, plastic



**Title: Slip**  
**Medium:** Tricot nylon, acetate satin, plastic



**Title: Slippers**  
**Medium:** Silk satin, linen, leather, silk ribbon



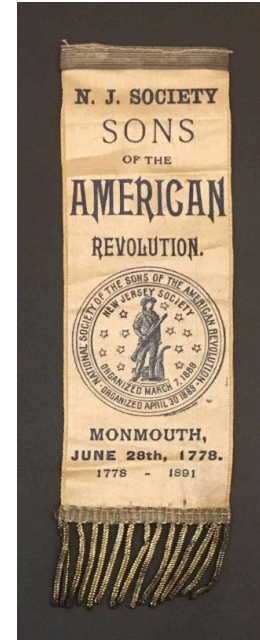
**Title: Smoking Out the Bear**

**Primary Maker:** Unknown  
**Artist**  
**Medium:** Oil on canvas



**Title: Snowfall in the Meadow**

**Date:** 1892  
**Primary Maker:** William Savery Bucklin  
**Medium:** Oil on canvas



**Title: Sons of the American Revolution Badge**

**Medium:** Silk, metallic thread, brass.



**Title: Soup Bowls**

**Primary Maker:** Spode  
**Medium:** Stone China



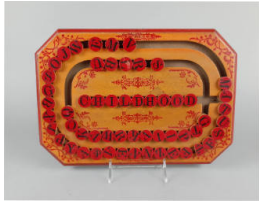
**Title: Souvenir Cup**

**Medium:** Colorless and red tinted pressed glass



**Title: Spectacle Case Covers**

**Medium:** Plied silk embroidery thread on punched paper with silk lining and binding



**Title: Spelling Board**  
**Medium:** Pine, basswood,  
steel wire



**Title: Spoon**  
**Medium:** Carved wood



**Title: Spur**  
**Primary Maker:** Asher  
Holmes  
**Medium:** Iron





**Title: Spyglass or Telescope**  
**Medium:** Brass, glass lenses, cherry wood



**Title: Stand**  
**Medium:** Walnut



**Title: Stand**  
**Medium:** Mahogany, mahogany veneer



**Title: Stand**  
**Medium:** Mahogany



**Title: Stand**  
**Medium:** Walnut



**Title: Starry Night Landscape**  
**Primary Maker:** William Savery Bucklin  
**Medium:** Graphite on paper mounted on cardboard



**Title: The Station Hack, Asbury Park**  
**Primary Maker:** Howard N. Cook  
**Medium:** Black ink on paper



**Title: Stays**  
**Medium:** Twilled cotton, linen, wood, kid leather, wool, iron



**Title: Stays**  
**Medium:** Linen, reed or wood



**Title:** The Steamboat Julia  
**Primary Maker:** Joseph Lee  
**Medium:** Oil on canvas



**Title:** Steamboat Keyport  
**Primary Maker:** James Bard  
**Medium:** Oil on canvas



**Title:** Steamboat on the River  
**Primary Maker:** William Savery Bucklin  
**Medium:** Graphite on paper



**Title:** Steamboat Paddlebox Lunette  
**Primary Maker:** Unknown Maker  
**Medium:** Carved, painted and gilded pine



**Title:** Steamboat Paddlebox Lunette  
**Primary Maker:** Unknown Maker  
**Medium:** Carved, painted, and gilded pine and oak



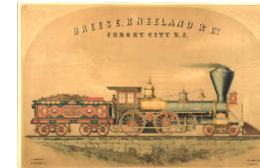
**Title:** Steamboat Republic Bound for Cape May  
**Primary Maker:** Century Lithograph Company of Philadelphia  
**Medium:** Chromolithograph on paper



**Title:** Steamboat Thomas Hunt  
**Primary Maker:** James Bard  
**Medium:** Oil on canvas



**Title:** Steam Ferry Boat New Jersey  
**Primary Maker:** Endicott & Co.  
**Medium:** Chromolithograph on paper



**Title:** The Steam Locomotive Young America  
**Primary Maker:** A. L. Holley  
**Medium:** Chromolithograph on paper



**Title:** A Steeplechase at Monmouth Park  
**Primary Maker:** Thure de Thulstrup  
**Medium:** Wood engraving on paper



**Title:** Stillwell Farm (Killdee Farm)  
**Primary Maker:** Viola Rome  
**Medium:** Oil on canvas



**Title:** Stone Church, Navesink  
**Primary Maker:** Elva M. Wright  
**Medium:** Watercolor and graphite on paper



**Title:** Storage Box  
**Medium:** Hard pine



**Title:** St. Peter's Church  
**Primary Maker:** Carrie A. Bowne Swift  
**Medium:** Oil on abalone shell



**Title:** St. Peter's Church  
**Primary Maker:** Carrie A. Bowne Swift  
**Medium:** Oil on metal



**Title:** Strasbourg On Les A Medal  
**Primary Maker:** Emile Adolphe Monier  
**Medium:** Bronze



**Title:** Stream and Trees in Winter  
**Primary Maker:** William Savery Bucklin  
**Medium:** Ink on paper



**Title:** Studio by Moonlight  
**Primary Maker:** William Savery Bucklin  
**Medium:** Graphite on paper mounted on cardboard



**Title:** Sucrier with Cover  
**Medium:** Feldspathic stoneware



**Title:** Sunlight Through Trees  
**Primary Maker:** Henry Thomas Gulick  
**Medium:** Oil on masonite



**Title:** Surgical Kit  
**Primary Maker:** Wade & Ford  
**Medium:** Mahogany, brass, velvet, steel



**Title:** Surveyor's Compass  
**Medium:** Brass, wood, leather



**Title:** Susanna Ustick (Mrs. Richard) Hartshorne  
**Medium:** Watercolor on ivory in gold, colorless glass, lacquered wood frame



**Title:** Swinging Horse Collar Patent Model  
**Medium:** Wood, brass, leather



**Title:** Swiss Waist Belt  
**Medium:** Corded silk, cotton, whalebone, twisted silk guimpe



**Title:** Sycamore Canyon  
**Primary Maker:** William Savery Bucklin  
**Medium:** Graphite on paper



**Title:** Syrup Pitcher  
**Primary Maker:** Thomas Booth  
**Medium:** Bisque porcelain, pewter





**Title: Table**  
**Primary Maker:** Jonathan Potter Holmes  
**Medium:** Maple, and hard pine



**Title: Table**  
**Medium:** Maple



**Title: Table**  
**Medium:** Walnut, maple, and pine



**Title: Table**  
**Medium:** Cherry, and hard pine



**Title: Tall Case Clock**  
**Primary Maker:** Joseph Hollinshead  
**Medium:** Walnut with pine back boards; pewter, gilded brass, and enameled metal



**Title: Tall Case Clock**  
**Primary Maker:** Elias Sayre  
**Medium:** Mahogany, mahogany veneer, cherry, and pine



**Title: Tall Case Clock**  
**Primary Maker:** Anthony Ward  
**Medium:** Maple, and hard pine



**Title: Tea Caddy**  
**Medium:** Glazed earthenware



**Title: Tea Caddy with Lid**  
**Medium:** Stoneware with tin glaze



**Title: Teaching Sampler**

**Medium:** Plied silk thread and linen thread on linen



**Title: Tea Cosy**

**Medium:** Cotton velvet, silk, cotton wadding, silk embroidery thread



**Title: Tea Pot**

**Primary Maker:** Leeds Pottery  
**Medium:** Earthenware, lead glaze



**Title: Teapot**

**Medium:** Porcelain



**Title: Teapot**

**Medium:** Feldspathic stoneware



**Title: Tea Pot with Lid**

**Medium:** Feldspathic Stoneware



**Title: Tea Table**

**Medium:** Cherry



**Title: Tea Table**

**Medium:** Walnut



**Title: Tea Table**

**Medium:** Mahogany, and cherry



**Title: Telephone**

**Medium:** Enameled steel, brass, celluloid, iron, wire, wool felt



**Title: Three Dancing Ladies**

**Primary Maker:** Phebe Mills  
**Medium:** Watercolor, pen and ink on wove paper



**Title: Tobacco Jar**

**Medium:** Tin enamel glaze over buff earthenware



**Title: Tobacco Jar**

**Medium:** Tin enamel glaze over buff earthenware



**Title: Tooth Extraction Key**

**Medium:** Iron



**Title: Top Hat**

**Medium:** Beaver, silk, grosgrain ribbon, leather, buckram



**Title: Top Hat**

**Medium:** Beaver, silk, grosgrain, leather



**Title: Toy Circus**

**Medium:** Basswood, printed paper, steel



**Title: Toy Ice Wagon**

**Date:** ca. 1870-1890  
**Medium:** Cast iron



**Title: Toy Steam Engine**

**Medium:** Steel, brass,  
nickel, iron



**Title: Toy Watering  
Lady**

**Medium:** Painted tin



**Title: Trade Sign -  
Apothecary**

**Primary Maker:** Unknown  
Maker

**Medium:** Molded copper  
and metal pipe



**Title: Trade Sign -  
Barber Pole**

**Primary Maker:** Unknown  
Maker

**Medium:** Turned and  
painted white pine



**Title: Trade Sign -  
Barber Pole**

**Primary Maker:** Unknown  
Maker

**Medium:** Turned wood with  
a metal socket for a light  
bulb and metal mounting  
brackets



**Title: Trade Sign - Boot**

**Primary Maker:** Unknown  
Maker

**Medium:** Cast iron





**Title:** Trade Sign,  
Daniel F. Woodruff  
**Plain & Fancy Sign  
Painter**  
**Primary Maker:** Daniel F.  
Woodruff  
**Medium:** Oil on canvas



**Title:** Trade Sign -  
Fountain Pen  
**Primary Maker:** Eagle  
Pencil Company  
**Medium:** Pine and copper,  
with metal hooks and chain



**Title:** Trade Sign -  
Straight Razor  
**Primary Maker:** Albert L.  
Silberstein  
**Medium:** Pine



**Title:** Trees and Stream  
**Primary Maker:** William  
Savery Bucklin  
**Medium:** Pen and ink on  
paper in original hinged  
mat board



**Title:** Trees and Woods  
**Primary Maker:** William  
Savery Bucklin  
**Medium:** Graphite on paper



**Title:** Trees in Late Fall  
**Primary Maker:** William  
Savery Bucklin  
**Medium:** Graphite on paper  
mounted on cardboard



**Title:** Tree Trunks and  
Woods at the Phalanx  
**Primary Maker:** William  
Savery Bucklin  
**Medium:** Graphite on paper



**Title:** Tree Trunks on  
the Hillside  
**Primary Maker:** William  
Savery Bucklin  
**Medium:** Graphite on paper  
mounted on cardboard



**Title:** Triangle Harrow  
Model  
**Medium:** Wood, brass



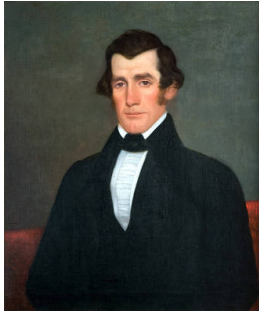
**Title:** Trolling for Blue Fish  
**Primary Maker:** Currier & Ives  
**Medium:** Chromolithograph on paper



**Title:** Trunk  
**Medium:** Wood, hide, leather, brass, paper



**Title:** Trunk  
**Medium:** Wood, wallpaper, iron, brass



**Title:** Tunis Vanderveer Conover  
**Primary Maker:** George Henry Durrie  
**Medium:** Oil on canvas



**Title:** Tureen  
**Medium:** Porcelain



**Title:** Tureen  
**Medium:** Earthenware



**Title:** Twine Holder  
**Medium:** Pine, paper



**Title:** Two Children of the Applegate Family  
**Primary Maker:** Alessandro E. Mario  
**Medium:** Oil on canvas



**Title:** Two Children with a Toy Soldier  
**Primary Maker:** Unknown Artist  
**Medium:** Oil on ivory



**Title:** Two Cliffs  
**Primary Maker:** William Savery Bucklin  
**Medium:** Graphite on paper glued to cardboard



**Title:** Two Folding Chairs  
**Medium:** Stained pine, ash; woven wool carpeting



**Title:** Typewriter  
**Primary Maker:** Franklin Typewriter Company  
**Medium:** Steel, nickel, leather, rubber, celluloid, oak, tin



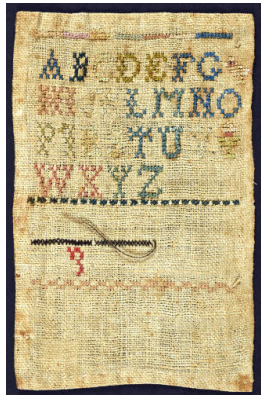
**Title:** "Uncle Tom" Plate  
**Primary Maker:** Geoffrey & Co.  
**Medium:** Earthenware



**Title:** Undershirt  
**Medium:** Wool flannel, cotton



**Title:** Unfinished Sampler  
**Medium:** Plied and flat silk thread on linen



**Title:** Unfinished Sampler  
**Medium:** Plied silk thread on linen



**Title:** Unidentified Gentleman  
**Primary Maker:** Unknown Maker  
**Medium:** Oil on ivory. Case of colorless glass, green velvet, snakeskin, brass, wood



**Title:** Unidentified Man in a Black Suit  
**Primary Maker:** Unknown Artist  
**Medium:** Oil on canvas





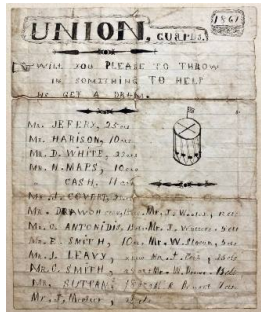
**Title:** Unidentified Man with White Hair  
**Primary Maker:** Harvey Jenkins  
**Medium:** Oil on canvas



**Title:** Unidentified Woman with Flowers  
**Primary Maker:** Unknown Artist  
**Medium:** Oil on canvas



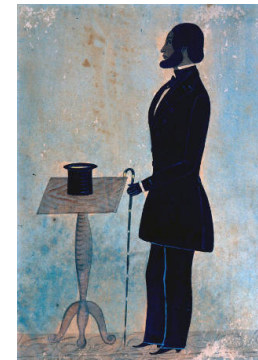
**Title:** Uniform Cap  
**Medium:** Wool, nylon, cotton, plastic



**Title:** Union Guards Drum Fund  
**Medium:** Ink on paper



**Title:** "Union is Strength" Nine Patch Quilt Block  
**Medium:** Cotton



**Title:** Unknown African-American Man  
**Primary Maker:** Unknown Artist  
**Medium:** Watercolor, gouache, graphite, and ink on paper



**Title:** Unknown African-American Woman  
**Primary Maker:** Unknown Artist  
**Medium:** Watercolor, gouache, graphite, and ink on paper



**Title:** Unknown Gentleman  
**Primary Maker:** James Martin  
**Medium:** Pastel on paper; reverse painting on glass



**Title:** Unknown Gentleman  
**Primary Maker:** Unknown Artist  
**Medium:** Watercolor and ink on paper, reverse-painted glass, gilt wood frame





**Title:** Unknown Young African-American Woman

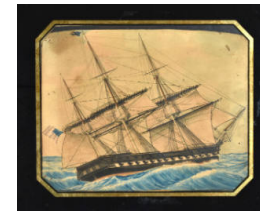
**Primary Maker:** Unknown Artist

**Medium:** Pen, ink and watercolor over graphite on paper



**Title:** Upholstered Back Stool

**Medium:** Mahogany, and maple or cherry



**Title:** U. S. Frigate Constitution

**Primary Maker:** Unknown Artist

**Medium:** Watercolor, ink and gouache on paper



**Title:** Vase

**Medium:** Tin glazed earthenware



**Title:** Vase of Flowers

**Primary Maker:** Elizabeth Lansdell Hammell

**Medium:** Watercolor on paper



**Title:** Verdun Medal

**Primary Maker:** Emile Seraphin Vernier

**Medium:** Silver



**Title:** Verdun Medal

**Medium:** Bronze



**Title:** Vest

**Medium:** Felt, plastic buttons



**Title:** View Along the Delaware River

**Primary Maker:** Thomas Birch

**Medium:** Oil on canvas



**Title:** View Near Perth Amboy  
**Primary Maker:** Thomas Birch  
**Medium:** Oil on wood panel



**Title:** View of Brunswick, N. Jersey  
**Primary Maker:** Archibald Robertson  
**Medium:** Ink and graphite on paper



**Title:** View of Haddon Hall in Haddonfield, New Jersey  
**Primary Maker:** John Evans Redman  
**Medium:** Watercolor, gouache and ink on paper



**Title:** View of Shrewsbury Town, New Jersey  
**Primary Maker:** Unknown Artist  
**Medium:** Ink and gray wash over graphite on beige paper



**Title:** View of the Highlands and Sandy Hook  
**Primary Maker:** E. A. Spinning  
**Medium:** Oil on canvas



**Title:** View of the Monmouth Battle-Ground, New Jersey  
**Primary Maker:** John H. Schenck  
**Medium:** Woodblock engraving on newsprint with handpainted watercolor



**Title:** View of the Walker House  
**Primary Maker:** Henry Thomas Gulick  
**Medium:** Oil on masonite



**Title:** View of the Water Gap and Columbia Glass Works - River Delaware  
**Primary Maker:** Thomas Birch  
**Medium:** Aquatint and engraving, with color added



**Title:** "Views of Asbury Park" Plate  
**Primary Maker:** Rowland & Marsellus Co.  
**Medium:** Transfer-printed and glazed earthenware



**Title:** Vigilant and Valkyrie in a "Thrash to Windward"  
**Primary Maker:** Currier & Ives  
**Medium:** Chromolithograph on paper



**Title:** Village of Long Branch, New Jersey 1849  
**Primary Maker:** Joshua Parker  
**Medium:** Watercolor and ink on paper



**Title:** Wainscot Armchair  
**Date:** 1695  
**Primary Maker:** Robert Rhea  
**Medium:** White oak, and yellow pine, identified by microanalysis at Winterthur performed by Gordon Saltar, 1975



**Title:** Waistcoat  
**Primary Maker:** John Grant  
**Medium:** Cotton, linen, metallic and silk threads



**Title:** Waistcoat  
**Medium:** Silk brocade, silk, glazed cotton, linen



**Title:** Waistcoat  
**Medium:** Brocade satin, glazed cotton, kid leather, twill tape



**Title:** Waistcoat  
**Medium:** Silk brocade, glazed cotton, linen



**Title:** Waistcoat  
**Medium:** Embroidered silk, glazed cotton



**Title:** Waistcoat  
**Medium:** Silk, linen, cotton



**Title: Waistcoat**  
**Medium:** Cotton, glass, metal



**Title: Waistcoat**  
**Medium:** Cotton, steel



**Title: Waistcoat**  
**Medium:** Silk satin, linen, cotton, brass



**Title: Waistcoat**  
**Medium:** Silk and wool, linen



**Title: Walking Dress**  
**Medium:** Corded silk, voided velvet, cotton



**Title: Walking Stick**  
**Medium:** Blackthorn, gold, gold and quartz nugget, iron, steel



**Title: Washington and Lee at Monmouth**  
**Primary Maker:** Unknown Artist  
**Medium:** Woodcut engraving on paper with watercolor enhancements



**Title: Washington at Monmouth**  
**Primary Maker:** Felix O. C. Darley  
**Medium:** Steel engraving on paper



**Title: Washington at Monmouth**  
**Primary Maker:** Felix O. C. Darley  
**Medium:** Engraving on paper





**Title:** Washington Confronting the Hessians at the Battle of Trenton  
**Primary Maker:** Edouard Frossard  
**Medium:** Ink and wash drawing on vellum.



**Title:** Washington Passing the Delaware  
**Primary Maker:** Unknown  
**Artist:**  
**Medium:** Oil on wood panel



**Title:** Washington Rallying the Troops at Monmouth  
**Primary Maker:** Emanuel Gottlieb Leutze  
**Medium:** Oil on canvas



**Title:** Washington's Headquarters at Newburgh  
**Primary Maker:** Sarah Hendrickson Van Schoick Reid  
**Medium:** Pastel and charcoal on prepared board coated with marble dust



**Title:** Washington's Headquarters at Tappan  
**Primary Maker:** Sarah Hendrickson Van Schoick Reid  
**Medium:** Pastel, charcoal and graphite on prepared board coated with marble dust



**Title:** Watch Fob  
**Medium:** Gold, carnelian



**Title:** Watch Fob  
**Medium:** Gold, onyx



**Title:** Watch Fob  
**Medium:** Gold, moonstone



**Title:** Watch Fob  
**Medium:** Gold, diamond



**Title: Water and Cliff**  
**Primary Maker:** William Savery Bucklin  
**Medium:** Graphite on paper mounted on cream colored card board



**Title: Water Cooler**  
**Medium:** Salt glazed stoneware



**Title: Wax Cross**  
**Medium:** Painted wood, wax, glass, wire



**Title: Weathervane**  
**Primary Maker:** J. W. Fiske Iron Works  
**Medium:** Cast iron, molded copper, and tin



**Title: Weathervane**  
**Medium:** Sheet iron, tin, and zinc



**Title: Wedding Dress**  
**Medium:** Satin, glazed cotton, silk



**Title: Wedding Dress**  
**Medium:** Silk taffeta, silk satin, silk fringe, glazed cotton



**Title: Wedding Dress**  
**Medium:** Silk, cotton, ivory



**Title: Wedding Shoes**  
**Medium:** Leather, silk, shell, cotton



**Title: Wedding Veil**  
**Medium:** Cotton



**Title: Westover School Medal**  
**Medium:** Bronze



**Title: Wetland Landscape**  
**Primary Maker:** William Savery Bucklin  
**Medium:** Graphite on paper



**Title: William and Hannah Boice Lippincott**  
**Primary Maker:** Unknown Artist  
**Medium:** Oil on ivory, gold frame with colorless glass



**Title: William Harrison Medal**  
**Primary Maker:** Joseph M. Stillwell  
**Medium:** Silver



**Title: William Hartshorne**  
**Medium:** Watercolor on ivory in gold, colorless glass, human hair



**Title: William I. Conover**  
**Primary Maker:** George Henry Durrie  
**Medium:** Oil on canvas



**Title: William Little**  
**Primary Maker:** Micah Williams  
**Medium:** Pastel on paper



**Title: Williampe Hendrickson Longstreet Pitney**  
**Primary Maker:** Micah Williams  
**Medium:** Pastel on paper



**Title:** The Wilson Farm  
**Primary Maker:** David Provost Van Brackle  
**Medium:** Oil on canvas



**Title:** Windsor Cradle  
**Medium:** Ash, pine and maple



**Title:** Windup Sulkey, Horse and Rider  
**Medium:** Tin, zinc, steel, cotton



**Title:** Winter (Conifers and Fence in a Snowy Field)  
**Primary Maker:** William Savery Bucklin  
**Medium:** Pen and ink on paper



**Title:** Winter Landscape with Trees and Stream  
**Primary Maker:** William Savery Bucklin  
**Medium:** Pen and ink on paper



**Title:** Woman of the Van Mater Family  
**Primary Maker:** Harvey Jenkins  
**Medium:** Oil on canvas



**Title:** Woman's Cape  
**Medium:** Wool, silk, velvet



**Title:** Woman's Day Gown  
**Medium:** Silk, silk fringe, glazed cotton



**Title:** Woman's Day Gown  
**Medium:** Lightweight wool challis, glazed cotton, cotton lace





**Title: Woman's Gloves**

**Date:** ca. 1800-1830

**Medium:** Chamois, velvet, silk.



**Title: Woman's Gown**

**Medium:** Wool, velvet, glazed cotton



**Title: Woman's Gown**

**Medium:** Watered silk, cotton, cotton lace, silk ribbon

**Title: Woman's Hat**

**Medium:** Velvet, buckram, wire, silk



**Title: Woman's Reception Gown**

**Medium:** Silk brocade, corded silk, georgette, silk ribbon, silk fringe, silk lace, steel boning, hooks and eyes



**Title: Woman's Shoes**

**Medium:** Leather, linen, silk



**Title: Woman's Summer Day Dress**

**Medium:** Printed cotton, cotton pique



**Title: Woman's Summer Day Dress**

**Medium:** Cotton



**Title: Woman's Walking Suit**

**Primary Maker:** Lillie Brown Anderson

**Medium:** Wool, velvet, cotton



**Title:** Woman Wearing a Blue Ribboned Cap  
**Primary Maker:** Unknown  
**Artist**  
**Medium:** Oil on canvas



**Title:** Woman with Small Red Book  
**Primary Maker:** Unknown  
**Artist**  
**Medium:** Oil on canvas



**Title:** The Women of '76. Molly Pitcher The Heroine of Monmouth  
**Primary Maker:** Currier & Ives  
**Medium:** Lithograph on paper



**Title:** Wooded Hillside  
**Primary Maker:** William Savery Bucklin  
**Medium:** Graphite on laid paper



**Title:** Wooded Hillside  
**Primary Maker:** William Savery Bucklin  
**Medium:** Graphite on paper



**Title:** A Wooded Path  
**Primary Maker:** William Savery Bucklin  
**Medium:** Graphite on paper



**Title:** Wooden Tombstone  
**Medium:** Hard pine



**Title:** Woods and Stream in Late Fall  
**Primary Maker:** William Savery Bucklin  
**Medium:** Graphite on paper



**Title:** Woods, Stream and Pond  
**Primary Maker:** William Savery Bucklin  
**Medium:** Graphite on paper



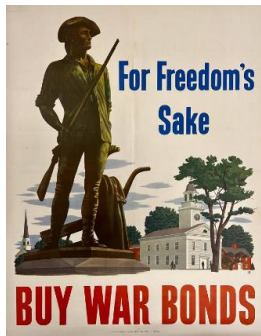
**Title:** Wool Spinning Wheel  
**Primary Maker:** Garret Denise  
**Medium:** Maple, oak, and ash



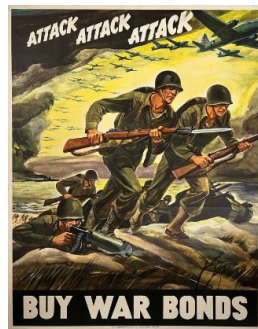
**Title:** Work Bag  
**Medium:** Silk, linen



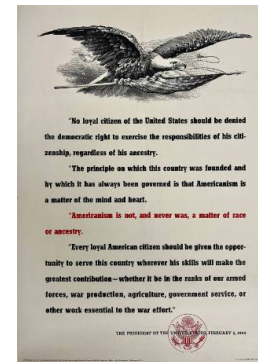
**Title:** World War 1 Victory Medal  
**Date:** 1918  
**Medium:** Bronze, silk



**Title:** World War II Poster  
**Primary Maker:** U.S. Department of Treasury  
**Medium:** Poster, color



**Title:** World War II Poster  
**Primary Maker:** U.S. Department of Treasury  
**Medium:** Poster, color



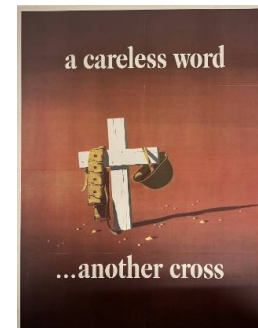
**Title:** World War II Poster  
**Primary Maker:** U.S. Government Printing Office  
**Medium:** Poster



**Title:** World War II Poster  
**Primary Maker:** U.S. Department of Treasury  
**Medium:** Poster, color

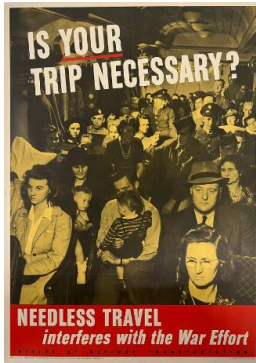


**Title:** World War II Poster  
**Primary Maker:** U.S. Public Health Service  
**Medium:** Poster, color

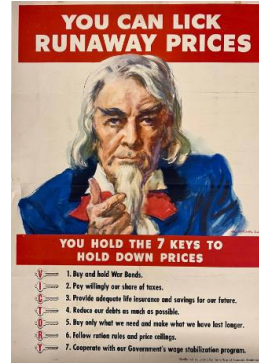


**Title:** World War II Poster  
**Primary Maker:** U.S. Office of War Information  
**Medium:** Poster, color





**Title:** World War II  
**Poster**  
**Primary Maker:** U.S.  
Government Printing Office  
**Medium:** Poster



**Title:** World War II  
**Poster**  
**Primary Maker:** U.S. Office  
of War Information  
**Medium:** Poster



**Title:** World War II  
**Poster**  
**Primary Maker:** U.S.  
Department of Agriculture  
**Medium:** Poster



**Title:** World War II  
**Poster**  
**Primary Maker:** U.S. Office  
of War Information  
**Medium:** Poster



**Title:** World War II  
**Poster**  
**Primary Maker:** National  
Board of Fire Underwriters  
**Medium:** Poster



**Title:** World War II  
**Poster**  
**Primary Maker:** Jes Wilhelm  
Schlaikjer  
**Medium:** Poster



**Title:** World War II  
**Poster**  
**Primary Maker:** U.S.  
Department of Treasury  
**Medium:** Poster



**Title:** World War II  
**Poster**  
**Primary Maker:** U.S. Office  
of War Information  
**Medium:** Poster



**Title:** World War II  
**Poster**  
**Primary Maker:** U.S. Office  
of War Information  
**Medium:** Poster





**Title:** The Wreck of the New Era  
**Primary Maker:** Drummond White  
**Medium:** Watercolor and gouache on brown paper

**Title:** Wrist Compass  
**Primary Maker:** Taylor  
**Medium:** Bakelite, leather, glass



**Title:** Yarn Sample Case  
**Primary Maker:** A. and M. Karagheusian  
**Medium:** Varnished maple, brass, wool yarn, cardboard



**Title:** Yarn Sample Color Cabinet  
**Primary Maker:** A. and M. Karagheusian  
**Medium:** Pine, steel, cardboard, wool yarn tufts



**Title:** Yarn Swift  
**Medium:** Walrus ivory, whalebone, baleen, silk



**Title:** Young Girl of the Veghte Family  
**Primary Maker:** Unknown Artist  
**Medium:** Pastel on paper