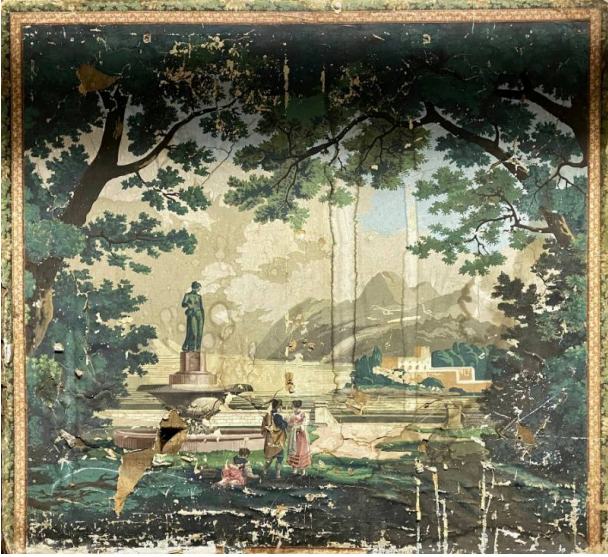


Basic Detail Report



Fireboard

Medium

Woodblock on paper, glued to plain woven linen canvas and mounted on pine strainer frame

Description

A rectangular fire board, comprised of a wallpaper panel glued to a simple pine strainer frame. The wallpaper panel is block printed on heavy paper, depicting a romanticized landscape scene of a classical fountain under lush trees, with a hilly backdrop. A man, woman, and child, all in pastoral costume, stand beside the fountain. A border of

patterned yellow is glued around the top and sides of the fire board. The pine frame support is fastened at each corner by simple lap joints fastened with glue and short brads.

Dimensions

32.25 × 35.5 × 1.75 in. (81.9 × 90.2 × 4.4 cm)