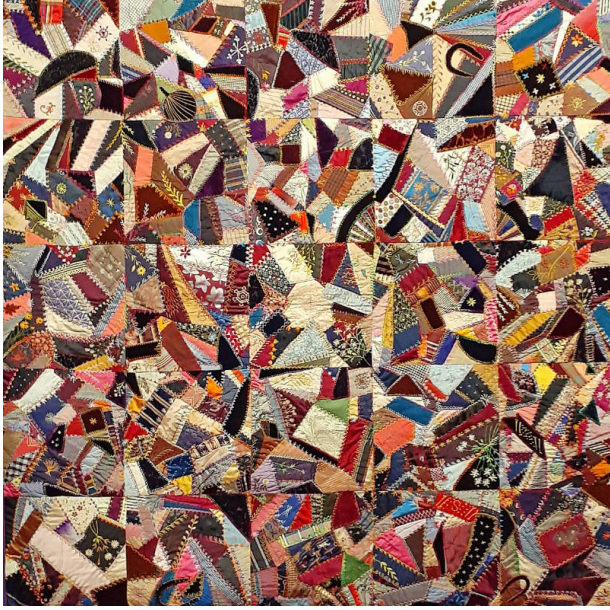


Basic Detail Report



Quilt

Medium

Silk, cotton and silk velvet, silk embroidery thread, silk satin

Description

A square quilt in a "Crazy Quilt" variation, comprised of individual blocks straight set five by five. Each square includes a wide variety of colorful solid and patterns silks and silk brocades, wide silk ribbon, and black and dark green velvet, all embroidered in floral and natural motifs including daisies, roses, spiderwebs, and decorative borders. The quilt has no binding. Instead, a narrow red

silk cord is whip stitched along all four edges as trim. The back of the quilt is a deep red silk satin solid. The batting may be cotton. In two areas, the initials "S" and "J" are worked in bright red silk embroidery floss.

Dimensions

57 × 56 in. (144.8 × 142.2 cm)