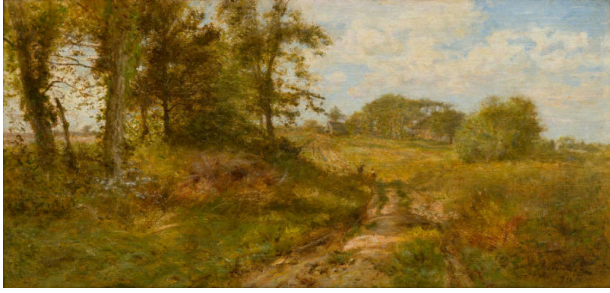


Basic Detail Report



The Road to the Bowne House

Primary Maker

James Crawford Thom

Medium

Oil on wood panel

Description

A late summer/early fall landscape view looking up a long dirt drive to a barn located left of center in the distance, with a story-and-a-half house to its right. The barn and house are separated by trees, with additional trees obscuring part of the house. Another stand of trees appears to the left of the roadway, with grassy areas in the foreground. Open fields can be seen beyond the trees, and to the right of the roadway. Two figures are walking up the roadway headed toward the farm. The sky is a sunny blue with white clouds.

Dimensions

11.5 × 24 in. (29.2 × 61 cm)