

Basic Report



Title: Arm Chair
Medium: Walnut, and hard pine or white cedar



Title: Arm Chair
Medium: Walnut, hard pine, and white cedar



Title: Arm Chair
Medium: Walnut



Title: Arm Chair
Medium: Maple, poplar, and ash



Title: Arm Chair
Medium: Maple, and oak



Title: Banister Back Arm Chair
Primary Maker: Michael Maps
Medium: Maple, ash



Title: Banister Back Arm Chair
Medium: Maple, and ash



Title: Banister Back Arm Chair
Medium: Maple, and ash



Title: Banister Back Side Chair
Medium: Maple



Title: Banister Back Side Chair
Medium: Maple



Title: Banister Back Side Chair
Medium: Maple



Title: Beau Brummell, or Man's Dressing Table
Medium: Rosewood shellacked to resemble mahogany



Title: Bidet
Medium: Mahogany, and hard pine



Title: Blanket Chest
Medium: Walnut, oak, chestnut, and tulip poplar



Title: Blanket Chest
Medium: Cedar, and hard pine



Title: Blanket Chest with Two Drawers
Medium: Tulip poplar and white pine



Title: Bow Back Windsor Arm Chair
Primary Maker: Samuel Jaques
Medium: Maple, pine, and ash



Title: Bowback Windsor Settee
Medium: Ash, pine and maple



Title: Bow Back Windsor Side Chair
Primary Maker: Thomas Cain
Medium: Maple, tulip poplar, and ash



Title: Bow Back Windsor Side Chair
Primary Maker: Samuel Jaques
Medium: Maple, ash, and poplar seat



Title: Candlestand
Medium: Cherry, pine



Title: Candlestand
Medium: Walnut



Title: Candlestand
Medium: Mahogany and cherry



Title: Candlestand
Medium: Mahogany



Title: Candlestand
Medium: Walnut



Title: Candlestand
Medium: Mahogany



Title: Candlestand
Medium: Maple



Title: Chest of Drawers
Primary Maker: Samuel Peacock
Medium: Birdseye and striped maple, maple veneer, sweet gum, and hard pine



Title: Chest of Drawers
Medium: Walnut, hard pine, and white cedar



Title: Chest of Drawers
Medium: Cherry, tulip poplar, and white pine with light wood inlay



Title: Chest on Chest
Medium: Mahogany (by microanalysis), pine, and tulip poplar



Title: Child's Arrow Back Rocking Arm Chair
Primary Maker: Pierson Thompson
Medium: Maple, and ash



Title: Child's Commode Chair
Medium: Grain painted pine



Title: Child's Continuous Bow Windsor Arm Chair
Medium: Maple, ash, and pine



Title: Child's Convertible High Chair
Medium: Low grade mahogany and hard pine



Title: Child's Drop Leaf Table
Medium: Walnut



Title: Child's High Chair
Primary Maker: John A. Clayton
Medium: Maple, and ash



Title: Child's Rocking Commode Chair
Medium: Hard pine



Title: Child's Rocking Commode Chair
Medium: Red painted pine



Title: Child's Sack Back Windsor Arm Chair
Medium: Maple, tulip poplar, and ash



Title: Child's Side Chair
Medium: Painted pine



Title: Child's Slat Back Arm Chair
Medium: Cherry, and ash



Title: Child's Slat Back Arm Chair
Medium: Maple, and ash



Title: Child's Slat Back High Chair
Medium: Maple, and ash



Title: Closet and Bed Patent Model
Medium: Basswood, brass, cotton, cotton batting



Title: Clothes Press

Primary Maker: Oliver Parsell

Medium: Cherry, mahogany veneer, tulip poplar, and pine



Title: Clothes Press

Primary Maker: Fenwick Lyell

Medium: Mahogany, mahogany veneer, tulip poplar, and white pine



Title: Clothes Press

Medium: Walnut, white pine and tulip poplar



Title: Clothes Press

Medium: Black walnut (by microanalysis), sweet gum, and white pine



Title: Continuous Bow Windsor Arm Chair

Primary Maker: John Sproson

Medium: Maple and ash



Title: Continuous Bow Windsor Arm Chair

Medium: Maple, ash, and pine



Title: Continuous Bow Windsor Arm Chair

Medium: Maple and ash



Title: Corner Chamber Chair

Primary Maker: William Savery

Medium: Maple, and pine



Title: Corner Chamber Chair

Medium: Cherry, and pine



Title: Corner Cupboard
Medium: Walnut, and white pine



Title: Corner Cupboard
Medium: Cherry, hard pine, mahogany veneer, maple and birch inlays



Title: Corner Cupboard
Medium: Walnut, tulip poplar, and pine



Title: Cradle
Medium: Walnut, and pine



Title: Cupboard
Medium: Tulip poplar, pine, and ash



Title: Cylinder Desk
Medium: Mahogany, mahogany veneer on hard pine, sweet gum, and tulip poplar



Title: Desk and Bookcase
Primary Maker: William Applegate
Medium: Mahogany, mahogany veneer, poplar, and pine



Title: Desk and Bookcase
Medium: Cherry, tulip poplar, and white cedar



Title: Desk and Bookcase
Medium: Cherry, pine, poplar, and mahogany



Title: Domed Chest
Medium: White pine



Title: Dough Box on Stand
Medium: Resinous pine, and oak



Title: Dressing Table
Medium: Cherry and hard pine



Title: Dressing Table
Medium: Mahogany, hard pine, and tulip poplar



Title: Dressing Table
Medium: Cherry, tulip, and hard pine



Title: Dressing Table
Medium: Walnut and hard pine



Title: Dressing Table
Medium: Cherry, walnut, and hard pine



Title: Dressing Table
Medium: Walnut, tulip poplar, and hard pine



Title: Drop Leaf Table
Medium: Walnut, hard pine, and oak



Title: Drop Leaf Table
Medium: Unidentified ring-porous hardwood and oak



Title: Drop Leaf Table
Medium: Walnut, oak, and tulip poplar



Title: Drop Leaf Table
Medium: Walnut, oak, and hard pine



Title: Fiddleback Arm Chair
Primary Maker: Hendrick Smock
Medium: Maple, ash, and tulip poplar



Title: Fiddleback Arm Chair
Medium: Maple, ash



Title: Fiddleback Rocking Arm Chair
Medium: Maple, ash, and pine



Title: Fiddleback Side Chair
Primary Maker: Hendrick Smock
Medium: Maple, ash, and tulip poplar



Title: Fiddleback Side Chair
Primary Maker: Hendrick Smock
Medium: Maple, ash, and tulip poplar



Title: Fiddleback Side Chair
Primary Maker: Daniel Hendrickson
Medium: Maple, and ash



Title: Fiddleback Side Chair
Medium: Maple, and ash



Title: Field Bedstead
Primary Maker: Alexander Low
Medium: Maple, tulip poplar, and hard pine



Title: Flax Wheel Base
Primary Maker: Alexander Low
Medium: Cherry and perhaps maple



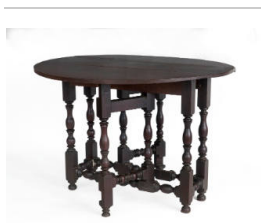
Title: Freehold Poor Chest
Medium: Hard pine



Title: Gaming Table
Medium: Mahogany, and striped maple



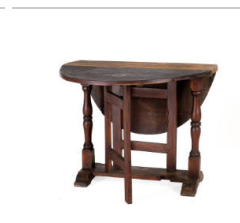
Title: Gaming Table
Medium: Mahogany, hard pine, and tulip poplar



Title: Gateleg Table
Medium: Walnut, and oak



Title: Gateleg Trestle Table
Primary Maker: Thomas Warne
Medium: Walnut, sweet gum, and hard pine



Title: Gateleg Trestle Table
Medium: Cherry, and oak



Title: Grisaille Painted Kast

Medium: Red gum, American tulip, and hard pine (identified by microanalysis at Winterthur in 1977)



Title: Hanging Cupboard

Medium: Painted oak with yellow pine shelves and bottom board, the latter determined by microanalysis



Title: High Back Windsor Arm Chair

Medium: Ash and maple, with tulip poplar seat and oak arm terminals



Title: High Back Windsor Arm Chair

Medium: Tulip seat, maple legs and stretchers, and ash above the seat



Title: High Back Windsor Arm Chair

Medium: Maple and ash



Title: High Chest

Medium: Cherry and hard pine



Title: High Chest

Medium: Cherry, tulip, and hard pine



Title: High Chest

Medium: Cherry, maple, and white pine (the last per wood analysis by Winterthur in 1977)



Title: High Post Bed

Medium: Tiger maple and maple



Title: Hooded Cradle
Medium: Walnut, and pine



Title: Kast
Primary Maker: Matthew Egerton Jr.
Medium: Sweet gum (identified through microanalysis in 1979 by the U. S. Department of Agriculture in Madison, WI), white and yellow pine secondary woods, and walnut applied panels



Title: Kast
Medium: Red gum (determined by microanalysis), yellow pine, and tulip poplar



Title: Low Back Windsor Arm Chair
Medium: Maple and ash



Title: Pembroke Table
Medium: Walnut and poplar



Title: Pin Top Table
Medium: Walnut, chestnut, and hard pine



Title: Pin Top Table
Medium: Tulip poplar and hard pine



Title: Rocking Settee
Medium: White pine, hickory, and ash



Title: Sack Back Windsor Arm Chair
Medium: Maple and ash



Title: Sack Back Windsor Arm Chair
Medium: Maple and ash



Title: Sack Back Windsor Arm Chair
Medium: Maple and ash



Title: Sideboard
Primary Maker: Alexander Low
Medium: Cherry, tulip poplar and white pine, with mahogany cockbeading



Title: Side Chair
Medium: Walnut, with hard pine seat frame and corner blocks



Title: Side Chair
Medium: Walnut and pine



Title: Side Chair
Medium: Walnut, with hard pine slip seat frame



Title: Side Chair
Medium: Walnut, with hard pine corner blocks and slip seat frame



Title: Side Chair
Medium: Mahogany, white oak, and Atlantic white cedar, the last two determined by microanalysis



Title: Side Chair
Medium: Mahogany, ash, and apparently tulip poplar



Title: Side Chair
Medium: Mahogany,
mahogany veneer, and ash



Title: Side Chair
Medium: Walnut and hard
pine, as determined by
microanalysis



Title: Side Chair
Medium: Cherry, and sweet
gum (determined by
microanalysis)



Title: Side Chair
Medium: Probably walnut,
and oak



Title: Side Chair
Medium: Mahogany, and
hard pine



Title: Side Chair
Medium: Mahogany, and
unidentified softwood
blocks



Title: Side Chair
Medium: Maple, and birch



Title: Side Chair
Medium: Maple, and oak



Title: Side Chair
Medium: Maple



Title: Side Chair
Medium: Mahogany



Title: Side Chair
Medium: Maple and ash



Title: Side Chair
Medium: Walnut, and pine



Title: Side Chair
Medium: Mahogany



Title: Side Chair
Medium: Mahogany, and hard pine



Title: Slab Table
Medium: Cherry and white pine, identified by microanalysis performed at the Center for Wood Anatomy Research, Madison, Wisconsin, and at Winterthur, both in 1977. Limestone identified by Margaret Carruthers, Museum of Natural History, New York.



Title: Slant Front Desk
Primary Maker: Samuel Vaughn
Medium: Maple, white pine, and tulip poplar



Title: Slant Front Desk
Medium: Mahogany, mahogany veneer, tulip poplar, and pine



Title: Slant Front Desk
Medium: Walnut, tulip poplar, and white pine



Title: Slant Front Desk on Frame

Medium: American birch (determined by microanalysis), white pine (determined by microanalysis), chestnut, and tulip poplar



Title: Slat Back Arm Chair

Primary Maker: Michael Maps
Medium: Maple and ash



Title: Slat Back Arm Chair

Primary Maker: Elizabeth "Betty" Dorn
Medium: Maple, ash or oak, with rush seat



Title: Slat Back Arm Chair

Primary Maker: Michael Maps
Medium: Maple, ash



Title: Slat Back Arm Chair

Medium: Probably maple and ash



Title: Slat Back Arm chair

Medium: Maple, and ash



Title: Slat Back Arm Chair

Medium: Maple, and ash



Title: Slat Back Arm Chair

Medium: Maple and ash



Title: Slat Back Arm Chair

Medium: Maple, and ash



Title: Slat Back Rocking Corner Chair
Primary Maker: Michael Maps
Medium: Maple, and ash



Title: Slat Back Side Chair
Primary Maker: Michael Maps
Medium: Maple and ash



Title: Slat Back Side Chair
Primary Maker: Cornelius A. Demarest
Medium: Maple, and ash



Title: Slat Back Side Chair
Primary Maker: William Hann
Medium: Maple, and ash



Title: Slat Back Side Chair
Medium: Maple, and ash



Title: Slat Back Side Chair
Medium: Maple



Title: Stand
Medium: Walnut



Title: Stand
Medium: Mahogany, mahogany veneer



Title: Stand
Medium: Mahogany



Title: Stand
Medium: Walnut



Title: Storage Box
Medium: Hard pine



Title: Table
Primary Maker: Jonathan Potter Holmes
Medium: Maple, and hard pine



Title: Table
Medium: Maple



Title: Table
Medium: Walnut, maple, and pine



Title: Table
Medium: Cherry, and hard pine



Title: Tall Case Clock
Primary Maker: Joseph Hollinshead
Medium: Walnut with pine back boards; pewter, gilded brass, and enameled metal



Title: Tall Case Clock
Primary Maker: Elias Sayre
Medium: Mahogany, mahogany veneer, cherry, and pine



Title: Tall Case Clock
Primary Maker: Anthony Ward
Medium: Maple, and hard pine



Title: Tea Table
Medium: Cherry



Title: Tea Table
Medium: Walnut



Title: Tea Table
Medium: Mahogany, and cherry



Title: Trunk
Medium: Wood, hide, leather, brass, paper



Title: Two Folding Chairs
Medium: Stained pine, ash; woven wool carpeting



Title: Upholstered Back Stool
Medium: Mahogany, and maple or cherry



Title: Wainscot Armchair
Date: 1695
Primary Maker: Robert Rhea
Medium: White oak, and yellow pine, identified by microanalysis at Winterthur performed by Gordon Saltar, 1975



Title: Windsor Cradle
Medium: Ash, pine and maple



Title: Wool Spinning Wheel
Primary Maker: Garret Denise
Medium: Maple, oak, and ash