

Basic Report



Title: Abandoned Building in the Woods
Primary Maker: William Savery Bucklin
Medium: Graphite on paper



Title: Bare Trees in Winter
Primary Maker: William Savery Bucklin
Medium: Graphite and Charcoal on textured paper glued to thin card board



Title: Birch Forest, Adirondacks
Primary Maker: William Savery Bucklin
Medium: Pen and ink on paper



Title: Broken Bridge Over a Stream
Primary Maker: William Savery Bucklin
Medium: Graphite on paper



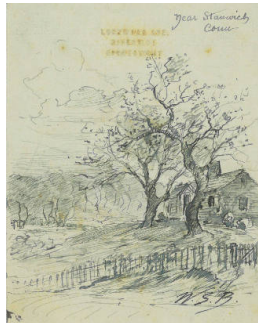
Title: California Sand Bluff and Moonlight
Primary Maker: William Savery Bucklin
Medium: Graphite on paper



Title: Corner of the Phalanstery Building in Late Fall
Primary Maker: William Savery Bucklin
Medium: Graphite on paper glued to cardboard



Title: Corn Field
Primary Maker: William Savery Bucklin
Medium: Graphite on paper



Title: Cottage and Trees Near Stanwick, Connecticut
Primary Maker: William Savery Bucklin
Medium: Pen and ink on laid paper



Title: Cottage and Trees Near Stanwick, Connecticut
Primary Maker: William Savery Bucklin
Medium: Graphite on paper



Title: A Cottage in the Snowy Moonlight
Primary Maker: William Savery Bucklin
Medium: Graphite on paper



Title: Entrance to Irving Bacheller Forest Adirondack Camp
Primary Maker: William Savery Bucklin
Medium: Pen and ink on paper mounted on cardboard



Title: Field, Trees, and Phalanx Outbuildings
Primary Maker: William Savery Bucklin
Medium: Graphite on paper glued to cardboard



Title: Fishing for Trout on Louis Brook, Nova Scotia
Primary Maker: William Savery Bucklin
Medium: Graphite on paper



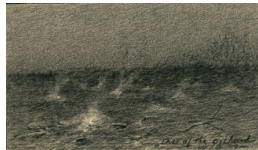
Title: Florida Forest Scene with Palms
Primary Maker: William Savery Bucklin
Medium: Graphite on paper glued to card board



Title: Florida Landscape with Palm Trees
Primary Maker: William Savery Bucklin
Medium: Graphite on paper



Title: House at Phalanx
Primary Maker: William Savery Bucklin
Medium: Graphite on paper glued to cardboard



Title: Last of the Orchard (Burning Brush in the Orchard)
Primary Maker: William Savery Bucklin
Medium: Charcoal and graphite on paper mounted on cardboard



Title: Little Tobiatic Brook
Primary Maker: William Savery Bucklin
Medium: Graphite on paper



Title: Men Stacking Hay
Primary Maker: William Savery Bucklin
Medium: Graphite on paper mounted on cardboard



Title: Midnight Storm on Wildcat Point, Nova Scotia
Primary Maker: William Savery Bucklin
Medium: Graphite on paper



Title: Moonlit Woods
Primary Maker: William Savery Bucklin
Medium: Graphite on paper



Title: Morning Frost
Primary Maker: William Savery Bucklin
Medium: Graphite on paper glued to card board



Title: Mossy Tree and Palmettos (Florida Landscape)
Primary Maker: William Savery Bucklin
Medium: Graphite on paper



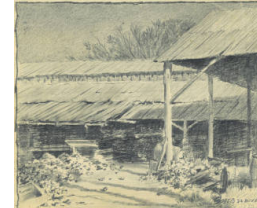
Title: Night Landscape at North American Phalanx
Primary Maker: William Savery Bucklin
Medium: Graphite on paper glued to cardboard



Title: Night Scene of the Phalanstery Building
Primary Maker: William Savery Bucklin
Medium: Graphite on paper, mounted on cardboard



Title: Old Outbuildings and Barrels at the Phalanx
Primary Maker: William Savery Bucklin
Medium: Graphite and charcoal on paper mounted to cardboard



Title: Old Phalanx Lumber Yard and Workshops
Primary Maker: William Savery Bucklin
Medium: Graphite on paper



Title: The Phalanstery
Building in Winter
Primary Maker: William
Savery Bucklin
Medium: Graphite on paper
mounted on cardboard,
with varnished surface



Title: The Phalanstery
Building in Winter
Primary Maker: William
Savery Bucklin
Medium: Graphite on paper
glued to cardboard



Title: Phalanx
Landscape
Primary Maker: William
Savery Bucklin
Medium: Graphite on paper
glued to cardboard



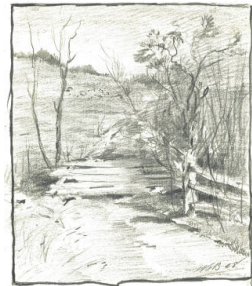
Title: Phalanx Ruinon
Primary Maker: William
Savery Bucklin
Medium: Graphite on paper



Title: A Pond in
Moonlight
Primary Maker: William
Savery Bucklin
Medium: Graphite on paper



Title: Road and Barn
Primary Maker: William
Savery Bucklin
Medium: Graphite on paper



Title: Road, Fence,
Trees and Hill
Primary Maker: William
Savery Bucklin
Medium: Graphite on paper
glued to cardboard



Title: Road To Laws
Farm in the Moonlight
Primary Maker: William
Savery Bucklin
Medium: Graphite on paper



Title: A Rocky Shore
**with Mossy Trees and
Lake**
Primary Maker: William
Savery Bucklin
Medium: Graphite on paper



Title: Ruins of an Old Building in the Woods
Primary Maker: William Savery Bucklin
Medium: Graphite on paper glued to cardboard



Title: Snowfall in the Meadow
Date: 1892
Primary Maker: William Savery Bucklin
Medium: Oil on canvas



Title: Starry Night Landscape
Primary Maker: William Savery Bucklin
Medium: Graphite on paper mounted on cardboard



Title: Steamboat on the River
Primary Maker: William Savery Bucklin
Medium: Graphite on paper



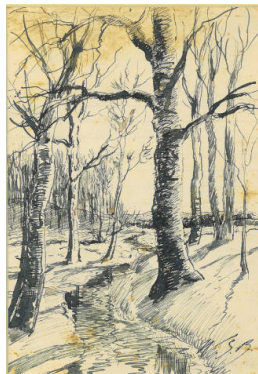
Title: Stream and Trees in Winter
Primary Maker: William Savery Bucklin
Medium: Ink on paper



Title: Studio by Moonlight
Primary Maker: William Savery Bucklin
Medium: Graphite on paper mounted on cardboard



Title: Sycamore Canyon
Primary Maker: William Savery Bucklin
Medium: Graphite on paper



Title: Trees and Stream
Primary Maker: William Savery Bucklin
Medium: Pen and ink on paper in original hinged mat board



Title: Trees and Woods
Primary Maker: William Savery Bucklin
Medium: Graphite on paper



Title: Trees in Late Fall
Primary Maker: William Savery Bucklin
Medium: Graphite on paper mounted on cardboard



Title: Tree Trunks and Woods at the Phalanx
Primary Maker: William Savery Bucklin
Medium: Graphite on paper



Title: Tree Trunks on the Hillside
Primary Maker: William Savery Bucklin
Medium: Graphite on paper mounted on cardboard



Title: Two Cliffs
Primary Maker: William Savery Bucklin
Medium: Graphite on paper glued to cardboard



Title: Water and Cliff
Primary Maker: William Savery Bucklin
Medium: Graphite on paper mounted on cream colored card board



Title: Wetland Landscape
Primary Maker: William Savery Bucklin
Medium: Graphite on paper



Title: Winter (Conifers and Fence in a Snowy Field)
Primary Maker: William Savery Bucklin
Medium: Pen and ink on paper



Title: Winter Landscape with Trees and Stream
Primary Maker: William Savery Bucklin
Medium: Pen and ink on paper



Title: Wooded Hillside
Primary Maker: William Savery Bucklin
Medium: Graphite on laid paper



Title: Wooded Hillside
Primary Maker: William Savery Bucklin
Medium: Graphite on paper



Title: A Wooded Path
Primary Maker: William Savery Bucklin
Medium: Graphite on paper



Title: Woods and Stream in Late Fall
Primary Maker: William Savery Bucklin
Medium: Graphite on paper



Title: Woods, Stream and Pond
Primary Maker: William Savery Bucklin
Medium: Graphite on paper